

DCI Polyclonal Antibody

Catalog number: 11535-1-AP

Size: 22 µg/150 µl

Source: Rabbit

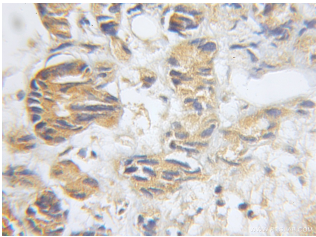
Isotype: IgG

Synonyms:

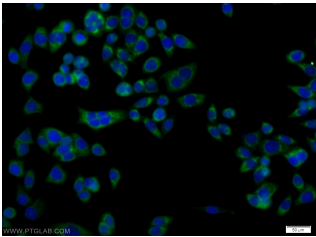
DCI; D3,D2 enoyl CoA

isomerase, DCI, Dodecenoyl

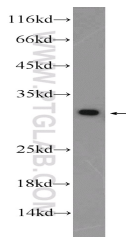
CoA isomerase, ECI1



Immunohistochemical of paraffin-embedded human prostate cancer using 11535-1-AP(DCI antibody) at dilution of 1:50 (under 10x lens)



Immunofluorescent analysis of BxPC-3 cells using 11535-1-AP(DCI Antibody) at dilution of 1:25 and Alexa Fluor 488-conjugated AffiniPure Goat Anti-Rabbit IgG(H+L)



HEK-293 cells were subjected to SDS PAGE followed by western blot with 11535-1-AP(DCI Antibody) at dilution of 1:600

Background

ECI1(enoyl-CoA delta isomerase 1, mitochondrial) is also named as DCI(dodecenoyl-CoA isomerase) and belongs to the enoyl-CoA hydratase/isomerase family. It is able to isomerize both 3-cis and 3-trans double bonds into the 2-trans form in a range of enoyl-CoA species. The full length protein has a transit peptide and 2 isoforms produced by alternative splicing and can exist as a homotrimer(PMID:15351645).

Applications

Tested applications:	ELISA, IHC, WB, IF
Species specificity:	Human,Mouse,Rat; other species not tested.
Calculated DCI MW:	302aa,33 kDa
Observed DCI MW:	31kd
Positive WB detected in	HEK-293 cells, BxPC-3 cells, human brain tissue, human kidney tissue, human lung tissue
Positive IHC detected in	Human prostate cancer tissue
Positive IF detected in	BxPC-3 cells
Recommended dilution:	WB: 1:200-1:2000 IHC: 1:20-1:200 IF: 1:10-1:100

Application key: WB = Western blotting, IHC = Immunohistochemistry, IF = Immunofluorescence, IP = Immunoprecipitation

Immunogen information

Immunogen:	Ag2094
GenBank accession number:	BC020228
Gene ID (NCBI):	1632
Full name:	Dodecenoyl-Coenzyme A delta isomerase (3,2 trans-enoyl-Coenzyme A isomerase)

Product information

Purification method:	Antigen affinity purification
Storage:	PBS with 0.1% sodium azide and 50% glycerol pH 7.3. Store at -20°C.