

## ORC5L Polyclonal Antibody

Catalog number: 11542-1-AP

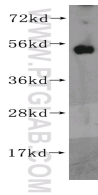
Size: 35 µg/150 µl

Source: Rabbit

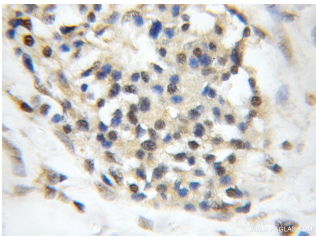
Isotype: IgG

Synonyms:

ORC5L; ORC5; ORC5P; ORC5T



mouse ovary tissue were subjected to SDS PAGE followed by western blot with 11542-1-AP(ORC5L Antibody) at dilution of 1:800



Immunohistochemistry of paraffin-embedded human pancreas cancer using 11542-1-AP(ORC5L Antibody) at Dilution 1:50 (under 10x lens)

### Background

Origin recognition complex (ORC) plays an essential role in the initiation of chromosome DNA replication and transcriptional silencing. ORC binds in an ATP-dependent manner to several well-defined autonomously replicating sequences that serve as the chromosomal replication origins. ORC5L is one of the 6 subunits of ORC.

### Applications

<b>Tested applications:</b>	ELISA, WB, IHC
<b>Species specificity:</b>	Human, mouse, rat; other species not tested.
<b>Positive WB detected in:</b>	Mouse ovary tissue, human kidney tissue
<b>Calculated ORC5L MW:</b>	435aa,50kd
<b>Observed ORC5L MW:</b>	50kd
<b>Positive IHC detected in:</b>	Human pancreas cancer
<b>Recommended dilution:</b>	WB: 1:200-1:2000 IHC: 1:20-1:200

Application key: WB = Western blotting, IHC = Immunohistochemistry, IF = Immunofluorescence, IP = Immunoprecipitation, FC = Flow cytometry

### Immunogen information

<b>Immunogen:</b>	Ag2133
<b>GenBank accession number:</b>	BC023652
<b>Gene ID (NCBI):</b>	5001
<b>Full name:</b>	Origin recognition complex, subunit 5-like (yeast)

### Product information

<b>Purification method:</b>	Antigen affinity purification
<b>Storage:</b>	PBS with 0.1% sodium azide and 50% glycerol pH 7.3. Store at -20°C.