

LAT Polyclonal Antibody

Catalog number: 11326-1-AP

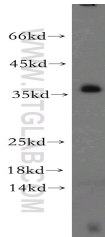
Size: 26 µg/150 µl

Source: Rabbit

Isotype: IgG

Synonyms:

LAT; LAT, LAT1, p36 38, pp36



Jurkat cells were subjected to SDS PAGE followed by western blot with 11326-1-AP(LAT antibody) at dilution of 1:300

Applications

Tested applications:	ELISA, WB
Species specificity:	Human, Mouse; other species not tested.
Calculated LAT MW:	262aa,28 kDa
Observed LAT MW:	36-38 kDa
Positive WB detected in	Jurkat cells, MCF-7 cells, mouse thymus tissue
Recommended dilution:	WB: 1:200-1:1000

Application key: WB = Western blotting, IHC = Immunohistochemistry, IF = Immunofluorescence, IP = Immunoprecipitation

Immunogen information

Immunogen:	Ag1868
GenBank accession number:	BC011563
Gene ID (NCBI):	27040
Full name:	Linker for activation of T cells

Product information

Purification method:	Antigen affinity purification
Storage:	PBS with 0.02% sodium azide and 50% glycerol pH 7.3. Store at -20°C.