

ETS1 Polyclonal Antibody

Catalog number: 12118-1-AP

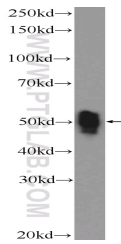
Size: 30 µg/150 µl

Source: Rabbit

Isotype: IgG

Synonyms:

ETS1; ETS 1, ETS1, EWSR2,
FLJ10768, p54, Protein C ets 1



Jurkat cells were subjected to SDS
PAGE followed by western blot with
12118-1-AP(ETS1 Antibody) at
dilution of 1:600

Applications

Tested applications:	ELISA, WB
Species specificity:	Human,Mouse,Rat; other species not tested.
Calculated ETS1 MW:	441aa,50 kDa
Observed ETS1 MW:	50 kDa
Positive WB detected in	Jurkat cells, mouse thymus tissue, NIH/3T3 cells
Recommended dilution:	WB: 1:200-1:2000

Application key: WB = Western blotting, IHC = Immunohistochemistry, IF = Immunofluorescence, IP = Immunoprecipitation

Immunogen information

Immunogen:	Ag2127
GenBank accession number:	BC017314
Gene ID (NCBI):	2113
Full name:	V-ets erythroblastosis virus E26 oncogene homolog 1 (avian)

Product information

Purification method:	Antigen affinity purification
Storage:	PBS with 0.02% sodium azide and 50% glycerol pH 7.3. Store at -20°C.