

## Cytokeratin 13 Polyclonal Antibody

Catalog number: 10164-2-AP

Size: 46 µg/150 µl

Source: Rabbit

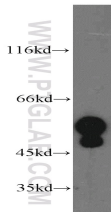
Isotype: IgG

Synonyms:

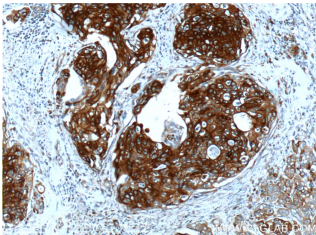
KRT13; CK 13, CK13,

Cytokeratin 13, K13, keratin 13,

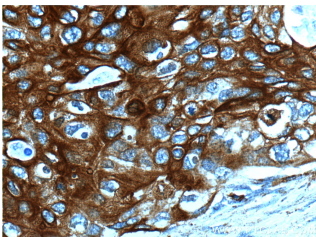
KRT13



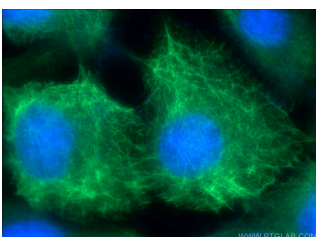
A431 cells were subjected to SDS PAGE followed by western blot with 10164-2-AP(KRT13 antibody) at dilution of 1:1000



Immunohistochemistry of paraffin-embedded human cervical cancer tissue slide using 10164-2-AP( KRT13 Antibody) at dilution of 1:200 (under 10x lens).



Immunohistochemistry of paraffin-embedded human cervical cancer tissue slide using 10164-2-AP( KRT13 Antibody) at dilution of 1:200 (under 40x lens).



### Background

Keratin 13 is a member of the keratin family. The keratins are intermediate filament proteins responsible for the structural integrity of epithelial cells and are subdivided into cytokeratins and hair keratins. Most of the type I cytokeratins consist of acidic proteins which are arranged in pairs of heterotypic keratin chains. This type I cytokeratin is paired with keratin 4 and expressed in the suprabasal layers of non-cornified stratified epithelia. Mutations in keratin 13 gene and keratin 4 have been associated with the autosomal dominant disorder White Sponge Nevus. The type I cytokeratins are clustered in a region of chromosome 17q21.2.

### Applications

Tested applications:	ELISA, WB, IP, IHC, IF
Cited applications:	IF, IHC
Species specificity:	Human, Mouse, Rat; other species not tested.
Cited species:	Human
Calculated Cytokeratin 13 MW:	50 kDa
Observed Cytokeratin 13 MW:	50 kDa
Positive WB detected in	A431 cells, HEK-293 cells, mouse skin tissue
Positive IP detected in	A431 cells
Positive IHC detected in	Human cervical cancer tissue, human breast cancer tissue, human lung cancer tissue, human neuroblastoma tissue, human oesophagus tissue
Positive IF detected in	A431 cells
Recommended dilution:	WB: 1:500-1:5000 IP: 1:500-1:5000 IHC: 1:50-1:500 IF: 1:20-1:200

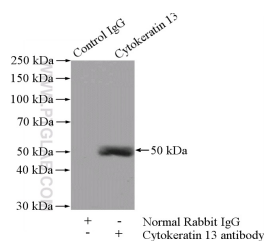
Application key: WB = Western blotting, IHC = Immunohistochemistry, IF = Immunofluorescence, IP = Immunoprecipitation

### Immunogen information

Immunogen:	Ag0217
GenBank accession number:	BC002661
Gene ID (NCBI):	3860
Full name:	Keratin 13

### Product information

Purification method:	Antigen affinity purification
Storage:	PBS with 0.1% sodium azide and 50% glycerol pH 7.3. Store at -20°C.



Immunofluorescent analysis of ( -20 Ethanol ) fixed A431 cells using 10164-2-AP( KRT13 Antibody) at dilution of 1:50 and Alexa Fluor 488-conjugated AffiniPure Goat Anti-Rabbit IgG(H+L)

IP Result of anti-KRT13 (IP:10164-2-AP, 4ug; Detection:10164-2-AP 1:1000) with A431 cells lysate 2400ug.