

SRX1 Polyclonal Antibody

Catalog number: 14273-1-AP

Size: 23 µg/150 µl

Source: Rabbit

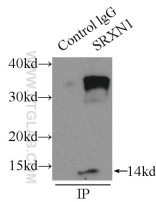
Isotype: IgG

Synonyms:

SRXN1; C20orf139, dJ850E9.2,

SRX, SRX1, SRXN1,

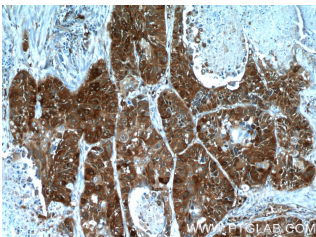
Sulfiredoxin 1, YKL086W



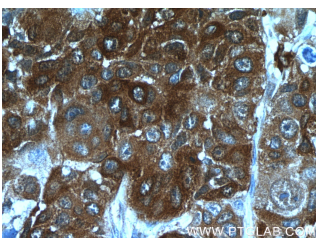
IP Result of anti-SRX1 (IP:14273-1-AP, 3µg; Detection:14273-1-AP 1:400) with A549 cells lysate 3300ug.



A549 cells were subjected to SDS PAGE followed by western blot with 14273-1-AP(SRX1 antibody) at dilution of 1:400



Immunohistochemistry of paraffin-embedded human lung cancer tissue slide using 14273-1-AP(SRX1 Antibody) at dilution of 1:50 (under 10x lens)



Immunohistochemistry of paraffin-embedded human

Applications

Tested applications:	ELISA, IP, IHC, WB
Cited applications:	IHC, WB
Species specificity:	Human, Mouse; other species not tested.
Cited species:	Human, mouse
Calculated SRX1 MW:	14 kDa
Observed SRX1 MW:	14 kDa
Positive WB detected in	A549 cells, mouse liver tissue, Transfected HEK-293 cells
Positive IP detected in	A549 cells
Positive IHC detected in	Human lung cancer tissue, human breast cancer tissue, human kidney tissue
Recommended dilution:	WB: 1:200-1:1000 IP: 1:200-1:1000 IHC: 1:20-1:200

Application key: WB = Western blotting, IHC = Immunohistochemistry, IF = Immunofluorescence, IP = Immunoprecipitation

Immunogen information

Immunogen:	Ag5613
GenBank accession number:	BC047707
Gene ID (NCBI):	140809
Full name:	Sulfiredoxin 1 homolog (<i>S. cerevisiae</i>)

Product information

Purification method:	Antigen affinity purification
Storage:	PBS with 0.02% sodium azide and 50% glycerol pH 7.3. Store at -20°C.

lung cancer tissue slide using
14273-1-AP(SRX1 Antibody)
at dilution of 1:50 (under 40x
lens)