

CLSTN1 Polyclonal Antibody

Catalog number: 12788-1-AP

Size: 40 µg/150 µl

Source: Rabbit

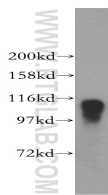
Isotype: IgG

Synonyms:

CLSTN1; ALC-ALPHA; CSTN1;

FLJ32258; KIAA0911; PIK3CD;

XB31alpha; alcalpha1; alcalpha2



human brain tissue were subjected to SDS PAGE followed by western blot with 12788-1-AP (CLSTN1 Antibody) at dilution of 1:1200

Applications

Tested applications:	ELISA, WB
Cited applications:	IF
Species specificity:	Human, mouse, rat; other species not tested.
Cited species:	Mouse
Positive WB detected in:	Human brain tissue
Calculated CLSTN1 MW:	109kd
Observed CLSTN1 MW:	109kd
Recommended dilution:	WB: 1:500-1:5000

Application key: WB = Western blotting, IHC = Immunohistochemistry, IF = Immunofluorescence, IP = Immunoprecipitation, FC = Flow cytometry

Immunogen information

Immunogen:	Ag3504
GenBank accession number:	BC033902
Gene ID (NCBI):	22883
Full name:	Calsyntenin 1

Product information

Purification method:	Antigen affinity purification
Storage:	PBS with 0.1% sodium azide and 50% glycerol pH 7.3. Store at -20°C.