

CCP1 Polyclonal Antibody

Catalog number: 14067-1-AP

Size: 26 µg/150 µl

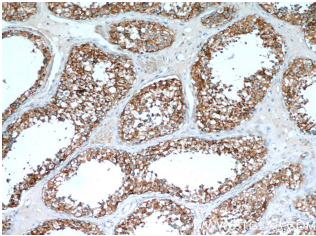
Source: Rabbit

Isotype: IgG

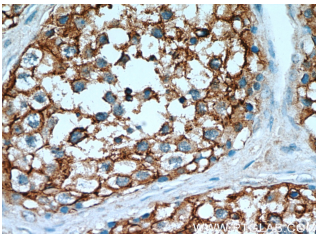
Synonyms:

AGTPBP1; AGTPBP1, ATP/GTP binding protein 1, CCP1,

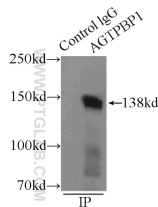
Cytosolic carboxypeptidase 1, DKFZp686M20191, KIAA1035, NNA1



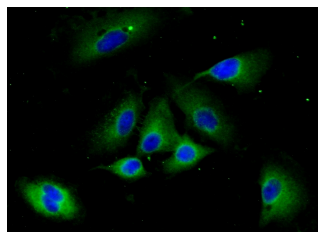
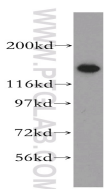
Immunohistochemical of paraffin-embedded human testis using 14067-1-AP (CCP1 antibody) at dilution of 1:50 (under 10x lens)



Immunohistochemical of paraffin-embedded human testis using 14067-1-AP (CCP1 antibody) at dilution of 1:50 (under 40x lens)



IP Result of anti-CCP1 (IP:14067-1-AP, 3ug; Detection:14067-1-AP 1:1000) with mouse testis tissue lysate 10000ug.



Background

AGTPBP1, also known as CCP1 (cytosolic carboxy-peptidase 1), or Nna1, belongs to the peptidase M14 family. AGTPBP1 is a zinc carboxypeptidase that contains nuclear localization signals and an ATP/GTP-binding motif. Thus, it may contribute to nuclear signaling events in differentiating and regenerating neurons. It serves important functions in the nervous system, and AGTPBP1 mutations may cause Purkinje cell degeneration (pcd) phenotypes.

Applications

Tested applications:	ELISA, IHC, WB, IP, IF
Cited applications:	IF, IHC, WB
Species specificity:	Human, Mouse, Rat; other species not tested.
Cited species:	Human, mouse
Calculated CCP1 MW:	138 kDa
Observed CCP1 MW:	138 kDa
Positive WB detected in	A549 cells, mouse testis tissue
Positive IP detected in	Mouse testis tissue
Positive IHC detected in	Human testis tissue, human heart tissue
Positive IF detected in	A549 cells
Recommended dilution:	WB: 1:200-1:2000
	IP: 1:500-1:5000
	IHC: 1:20-1:200
	IF: 1:10-1:100

Application key: WB = Western blotting, IHC = Immunohistochemistry, IF = Immunofluorescence, IP = Immunoprecipitation

Immunogen information

Immunogen:	Ag5122
GenBank accession number:	BC060815
Gene ID (NCBI):	23287
Full name:	ATP/GTP binding protein 1

Product information

Purification method:	Antigen affinity purification
Storage:	PBS with 0.02% sodium azide and 50% glycerol pH 7.3. Store at -20°C.

A549 cells were subjected to SDS PAGE followed by western blot with 14067-1-AP(CCP1 antibody) at dilution of 1:500

Immunofluorescent analysis of (-20% Ethanol) fixed A549 cells using 14067-1-AP(CCP1 Antibody) at dilution of 1:25 and Alexa Fluor 488-conjugated AffiniPure Goat Anti-Rabbit IgG(H+L)