

CEA Polyclonal Antibody

Catalog number: 10421-1-AP

Size: 30 µg/150 µl

Source: Rabbit

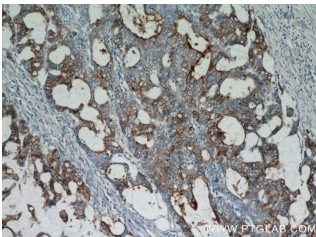
Isotype: IgG

Synonyms:

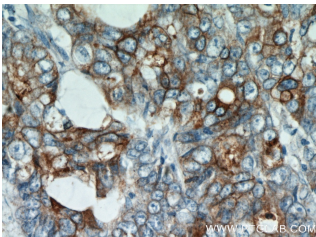
CEACAM5; Carcinoembryonic antigen, CD66e, CEA,

CEACAM5, DKFZp781M2392,

Meconium antigen 100



Immunohistochemical of paraffin-embedded human colon cancer using 10421-1-AP(CEA antibody) at dilution of 1:50 (under 10x lens)



Immunohistochemical of paraffin-embedded human colon cancer using 10421-1-AP(CEA antibody) at dilution of 1:50 (under 40x lens)

Background

Carcinoembryonic antigen (CEA), also known as CEACAM5 or CD66e, is a cell surface glycoprotein belonging to the immunoglobulin superfamily, mainly serving as a cell adhesion molecule mediating intercellular contact by both homophilic and heterophilic binding (PMID: 21731662). CEA inhibits anoikis and plays a role in tumorigenesis and metastasis. CEA has been found to be overexpressed in a wide variety of human cancers, including colon, breast, and lung (PMID: 17167768). CEA is a tumor marker and is routinely exploited for diagnosis.

Applications

Tested applications:	ELISA, IHC
Cited applications:	IHC
Species specificity:	Human; other species not tested.
Cited species:	Human
Calculated CEA MW:	77 kDa
Observed CEA MW:	
Positive IHC detected in	Human colon cancer tissue, human colon tissue, human lung cancer tissue, human pancreas cancer tissue, human stomach cancer tissue
Recommended dilution:	IHC: 1:20-1:200

Application key: WB = Western blotting, IHC = Immunohistochemistry, IF = Immunofluorescence, IP = Immunoprecipitation

Immunogen information

Immunogen:	Ag0672
GenBank accession number:	BC034671
Gene ID (NCBI):	1048
Full name:	Carcinoembryonic antigen-related cell adhesion molecule 5

Product information

Purification method:	Antigen affinity purification
Storage:	PBS with 0.1% sodium azide and 50% glycerol pH 7.3. Store at -20°C.