

Cytokeratin 19 Polyclonal Antibody

Catalog number: 10712-1-AP

Size: 39 µg/150 µl

Source: Rabbit

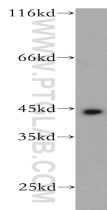
Isotype: IgG

Synonyms:

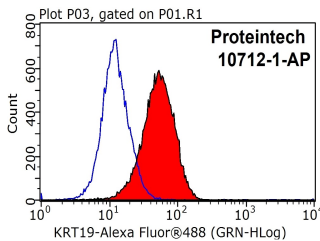
KRT19; CK 19, CK19,

Cytokeratin 19, K19, K1CS,

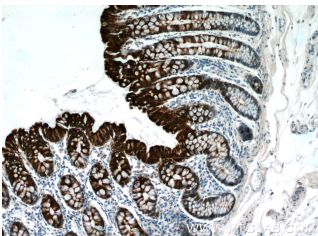
keratin 19, KRT19



A431 cells were subjected to SDS PAGE followed by western blot with 10712-1-AP (KRT19 antibody) at dilution of 1:1500



1X10⁶ MCF-7 cells were stained with 0.2µg CK19 antibody (10712-1-AP, red) and control antibody (blue). Fixed with 90% MeOH blocked with 3% BSA (30 min). Alexa Fluor 488-conjugated AffiniPure Goat Anti-Rabbit IgG(H+L) with dilution 1:1000.



Immunohistochemistry of paraffin-embedded human colon tissue slide using 10712-1-AP (CK19 Antibody) at dilution of 1:200 (under 10x lens)

Background

Keratins are a large family of proteins that form the intermediate filament cytoskeleton of epithelial cells. Keratin expression is highly regulated, tissue specific, and varies according to cell-state. Type I keratins consist of acidic, low molecular weight proteins with MW ranging from 40 kDa (KRT19) to 64 kDa (KRT9). Type 2 keratins consist of basic or neutral, high molecular weight proteins with MW from 52 kDa (KRT8) to 67 kDa (KRT18). Keratin 19 is a type I cytokeratin. It is a biochemical marker of skin stem cells in vivo and in vitro.

Applications

Tested applications:	ELISA, WB, FC, IHC
Cited applications:	IF, IHC, WB
Species specificity:	Human, Mouse; other species not tested.
Cited species:	Human, mouse, rat
Calculated Cytokeratin 19 MW:	40 kDa
Observed Cytokeratin 19 MW:	44-50 kDa
Positive WB detected in	A431 cells, A549 cells, HepG2 cells, MCF7 cells, mouse brain tissue, mouse placenta tissue
Positive IHC detected in	Human colon tissue, human appendix tissue, human breast cancer tissue, human endometrial cancer tissue, human liver cancer tissue, human liver tissue, human lung cancer tissue, human ovary tumor tissue, human pancreas cancer tissue, human pancreas tissue, human prostate cancer tissue, human prostate hyperplasia tissue, human skin tissue, human thyroid cancer tissue
Positive FC detected in	MCF-7 cells
Recommended dilution:	WB: 1:500-1:5000 IHC: 1:20-1:200 FC: N/A

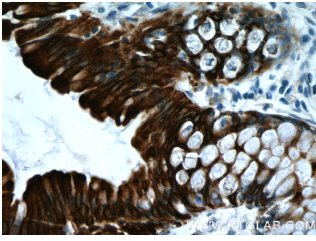
Application key: WB = Western blotting, IHC = Immunohistochemistry, IF = Immunofluorescence, IP = Immunoprecipitation

Immunogen information

Immunogen:	Ag1085
GenBank accession number:	BC007628
Gene ID (NCBI):	3880
Full name:	Keratin 19

Product information

Purification method:	Antigen affinity purification
Storage:	PBS with 0.1% sodium azide and 50% glycerol pH 7.3. Store at -20°C.



Immunohistochemistry of paraffin-embedded human colon tissue slide using 10712-1-AP (CK19 Antibody) at dilution of 1:200 (under 40x lens)