

FOXR2 Polyclonal Antibody

Catalog number: 14111-1-AP

Size: 46 µg/150 µl

Source: Rabbit

Isotype: IgG

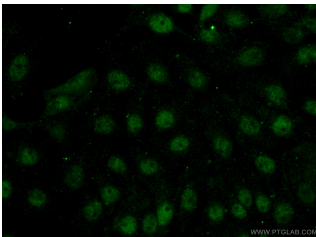
Synonyms:

FOXR2; Forkhead box protein

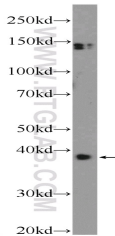
N6, Forkhead box protein R2,

forkhead box R2, FOXN6,

FOXR2



Immunofluorescent analysis of (-20 min Acetone) fixed SH-SY5Y cells using 14111-1-AP(FOXR2 Antibody) at dilution of 1:50 and Alexa Fluor 488-conjugated AffiniPure Goat Anti-Rabbit IgG(H+L)



SH-SY5Y cells were subjected to SDS PAGE followed by western blot with 14111-1-AP(FOXR2 Antibody) at dilution of 1:300

Applications

Tested applications:	ELISA, WB, IF
Species specificity:	Human; other species not tested.
Calculated FOXR2 MW:	36 kDa
Observed FOXR2 MW:	38 kDa
Positive WB detected in	SH-SY5Y cells
Positive IF detected in	SH-SY5Y cells
Recommended dilution:	WB: 1:200-1:1000 IF: 1:50-1:500

Application key: WB = Western blotting, IHC = Immunohistochemistry, IF = Immunofluorescence, IP = Immunoprecipitation

Immunogen information

Immunogen:	Ag5257
GenBank accession number:	BC012934
Gene ID (NCBI):	139628
Full name:	Forkhead box R2

Product information

Purification method:	Antigen affinity purification
Storage:	PBS with 0.1% sodium azide and 50% glycerol pH 7.3. Store at -20°C.