

## BNP Polyclonal Antibody

Catalog number: 13299-1-AP

Size: 46 µg/150 µl

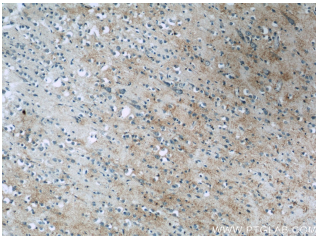
Source: Rabbit

Isotype: IgG

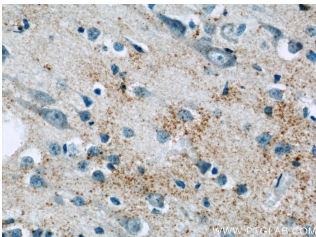
Synonyms:

NPPB; BNP, BNP(1 32),

Natriuretic peptides B, NPPB



Immunohistochemistry of paraffin-embedded human brain slide using 13299-1-AP (BNP Antibody) at dilution of 1:50



Immunohistochemistry of paraffin-embedded human brain slide using 13299-1-AP (BNP Antibody) at dilution of 1:50

### Background

NPPB, also known as B-type natriuretic peptide (BNP), is a cardiac hormone that is secreted mainly in the ventricles in response to increased wall stress. The protein undergoes two cleavage events, one within the cell and a second after secretion into the blood. The protein's biological actions include natriuresis, diuresis, vasorelaxation, inhibition of renin and aldosterone secretion, and a key role in cardiovascular homeostasis. BNP is a marker of systolic and diastolic dysfunction and a strong predictor of mortality in heart failure patients.

### Applications

Tested applications:	ELISA, IHC
Species specificity:	Human; other species not tested.
Calculated BNP MW:	134aa,15 kDa
Observed BNP MW:	
Positive IHC detected in	Human brain tissue, human heart tissue
Recommended dilution:	IHC: 1:20-1:200

Application key: WB = Western blotting, IHC = Immunohistochemistry, IF = Immunofluorescence, IP = Immunoprecipitation

### Immunogen information

Immunogen:	Ag4039
GenBank accession number:	BC025785
Gene ID (NCBI):	4879
Full name:	Natriuretic peptide precursor B

### Product information

Purification method:	Antigen affinity purification
Storage:	PBS with 0.1% sodium azide and 50% glycerol pH 7.3. Store at -20°C.