

## SHC Polyclonal Antibody

Catalog number: 12496-1-AP

Size: 27 µg/150 µl

Source: Rabbit

Isotype: IgG

Synonyms:

SHC1; FLJ26504, SH2 domain protein C1, SHC, SHC

transforming protein 1, SHC

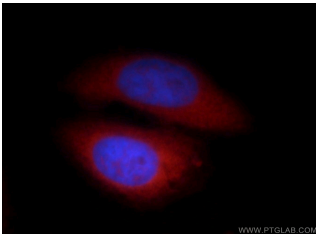
transforming protein 3, SHC

transforming protein A, SHC1, SHCA

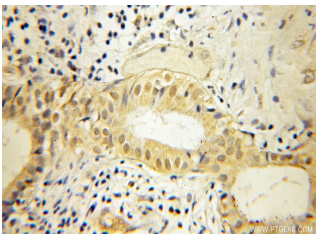
### Applications

Tested applications:	ELISA, WB, IHC, IF
Species specificity:	Human, Mouse, Rat; other species not tested.
Calculated SHC MW:	66kd
Observed SHC MW:	52kd and 66kd
Positive WB detected in	NIH/3T3 cells, HeLa cells
Positive IHC detected in	Human pancreas cancer tissue
Positive IF detected in	HepG2 cells
Recommended dilution:	WB: 1:500 - 1:2000 IHC: 1:25 - 1:100 IF: 1:12.5 - 1:50

Application key: WB = Western blotting, IHC = Immunohistochemistry, IF = Immunofluorescence, IP = Immunoprecipitation



Immunofluorescent analysis of HepG2 cells, using SHC1 antibody 12496-1-AP at 1:25 dilution and Rhodamine-labeled goat anti-rabbit IgG (red). Blue pseudocolor = DAPI (fluorescent DNA dye).



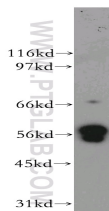
Immunohistochemical of paraffin-embedded human pancreas cancer using 12496-1-AP (SHC1 antibody) at dilution of 1:50 (under 10x lens)

### Immunogen information

Immunogen:	Ag3165
GenBank accession number:	BC014158
Gene ID (NCBI):	6464
Full name:	SHC (Src homology 2 domain containing) transforming protein 1

### Product information

Purification method:	Antigen affinity purification
Storage:	PBS with 0.1% sodium azide and 50% glycerol pH 7.3. Store at -20°C.



NIH/3T3 cells were subjected to SDS PAGE followed by western blot with 12496-1-AP (SHC1 antibody) at dilution of 1:500