

SPARCL1 Polyclonal Antibody

Catalog number: 13517-1-AP

Size: 46 µg/150 µl

Source: Rabbit

Isotype: IgG

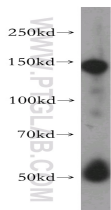
Synonyms:

SPARCL1; Hevin, MAST 9,

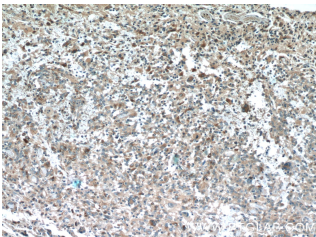
PIG33, SC1, SPARC like 1

(hevin), SPARC like protein 1,

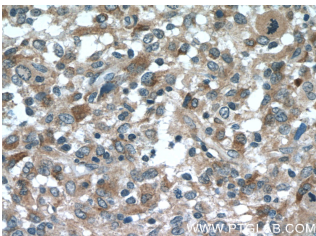
SPARCL1



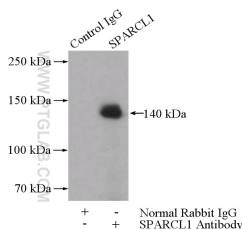
human heart tissue were subjected to SDS PAGE followed by western blot with 13517-1-AP (SPARCL1 antibody) at dilution of 1:400



Immunohistochemistry of paraffin-embedded human gliomas tissue slide using 13517-1-AP (SPARCL1 Antibody) at dilution of 1:50 (under 10x lens)



Immunohistochemistry of paraffin-embedded human gliomas tissue slide using 13517-1-AP (SPARCL1 Antibody) at dilution of 1:50 (under 40x lens)



Background

SPARC-like protein 1 (SPARCL1), also known as SC1 or Hevin, is an extracellular matrix glycoprotein that belongs to the SPARC family. SPARCL1 is widely expressed in normal and cancer tissues, and has been shown to regulate cellular adhesion and migration. SPARCL1 has been implicated in tumor initiation, formation, and progression of various cancers, including pancreatic, prostate, bladder, ovarian, breast and non-small cell lung cancers.

Applications

Tested applications:	ELISA, WB, IHC, IP
Species specificity:	Human, Mouse, Rat; other species not tested.
Calculated SPARCL1 MW:	664aa, 75 kDa
Observed SPARCL1 MW:	130-140 kDa
Positive WB detected in	Human heart tissue
Positive IP detected in	Raji cells
Positive IHC detected in	Human gliomas tissue
Recommended dilution:	WB: 1:500-1:5000 IP: 1:200-1:1000 IHC: 1:20-1:200

Application key: WB = Western blotting, IHC = Immunohistochemistry, IF = Immunofluorescence, IP = Immunoprecipitation

Immunogen information

Immunogen:	Ag4448
GenBank accession number:	BC033721
Gene ID (NCBI):	8404
Full name:	SPARC-like 1 (hevin)

Product information

Purification method:	Antigen affinity purification
Storage:	PBS with 0.02% sodium azide and 50% glycerol pH 7.3. Store at -20°C.

**IP Result of anti-SPARCL1
(IP:13517-1-AP, 4ug;
Detection:13517-1-AP 1:300)
with Raji cells lysate 1440ug.**