

## V5-tag Polyclonal Antibody

**Catalog number:** 14440-1-AP

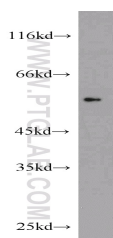
**Size:** 20 µg/150 µl

**Source:** Rabbit

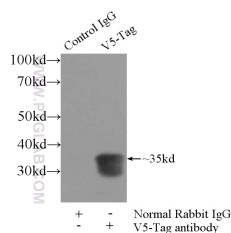
**Isotype:** IgG

**Synonyms:**

**V5 tag**



Recombinant protein were subjected to SDS PAGE followed by western blot with 14440-1-AP(V5-tag antibody) at dilution of 1:32000



IP Result of anti-V5-tag (IP:14440-1-AP, 3ug; Detection:14440-1-AP 1:20000) with Recombinant protein lysate 3000ug.

### Background

The antibody is developed against a synthetic 14 aa peptide (GKIPNPLLGLDST), the V5 tag, which presents in many vectors.

### Applications

Tested applications:	ELISA, WB, IP
Species specificity:	Human; other species not tested.
Calculated V5-tag MW:	1 kDa
Observed V5-tag MW:	
Positive WB detected in	Recombinant protein
Positive IP detected in	Recombinant protein protein
Recommended dilution:	WB: 1:2000-1:20000 IP: 1:5000-1:50000

Application key: WB = Western blotting, IHC = Immunohistochemistry, IF = Immunofluorescence, IP = Immunoprecipitation

### Immunogen information

Immunogen:	Peptide
GenBank accession number:	
Gene ID (NCBI):	
Full name:	Undefined

### Product information

Purification method:	Antigen affinity purification
Storage:	PBS with 0.1% sodium azide and 50% glycerol pH 7.3. Store at -20°C.