

golgin 97 Polyclonal Antibody

Catalog number: 12640-1-AP

Size: 20 µg/150 µl

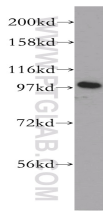
Source: Rabbit

Isotype: IgG

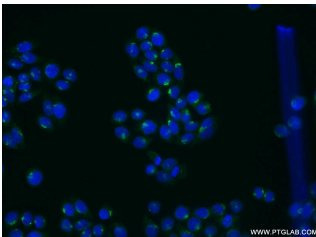
Synonyms:

GOLGA1; GOLGA1, golgin 97,

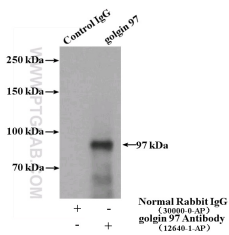
Golgin subfamily A member 1



SMMC-7721 cells were subjected to SDS PAGE followed by western blot with 12640-1-AP(GOLGA1 antibody) at dilution of 1:500



Immunofluorescent analysis of HeLa cells using 12640-1-AP(GOLGA1 Antibody) at dilution of 1:25 and Alexa Fluor 488-conjugated AffiniPure Goat Anti-Rabbit IgG(H+L)



IP Result of anti-GOLGA1 (IP:12640-1-AP, 4µg; Detection:12640-1-AP 1:300) with mouse kidney tissue lysate 4000ug.

Background

Golgin subfamily A member 1 is a protein that in humans is encoded by the GOLGA1 gene. GOLGA1 has been shown to interact with ARL1. GOLGA1 is associated with Sjogren's syndrome. The MW of this protein is 97 kDa, and Catalog#12640-1-AP specially recognises the 97 kDa protein. IF result shows strong Golgi staining.

Applications

Tested applications:	ELISA, WB, IF, IP
Species specificity:	Human, Mouse; other species not tested.
Calculated golgin 97 MW:	767aa,88 kDa
Observed golgin 97 MW:	97 kDa
Positive WB detected in	SMMC-7721 cells, HeLa cells, mouse kidney tissue
Positive IP detected in	Mouse kidney tissue
Positive IF detected in	HeLa cells
Recommended dilution:	WB: 1:500-1:5000
	IP: 1:200-1:1000
	IF: 1:10-1:100

Application key: WB = Western blotting, IHC = Immunohistochemistry, IF = Immunofluorescence, IP = Immunoprecipitation

Immunogen information

Immunogen:	Ag3335
GenBank accession number:	BC032853
Gene ID (NCBI):	2800
Full name:	Golgi autoantigen, golgin subfamily a, 1

Product information

Purification method:	Antigen affinity purification
Storage:	PBS with 0.1% sodium azide and 50% glycerol pH 7.3. Store at -20°C.