

KIRREL2 Polyclonal Antibody

Catalog number: 10890-1-AP

Size: 62 µg/150 µl

Source: Rabbit

Isotype: IgG

Synonyms:

KIRREL2; DKFZp564A1164,

FILTRIN, Kin of IRRE like

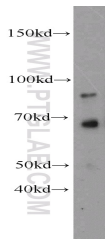
protein 2, KIRREL2, NEPH3,

Nephrin like protein 3, NLG1

Applications

Tested applications:	ELISA, WB
Species specificity:	Human, Mouse, Rat; other species not tested.
Calculated KIRREL2 MW:	75 kDa
Observed KIRREL2 MW:	67 kDa, 90 kDa
Positive WB detected in	Mouse liver tissue, Transfected HEK-293 cells
Recommended dilution:	WB: 1:200-1:1000

Application key: WB = Western blotting, IHC = Immunohistochemistry, IF = Immunofluorescence, IP = Immunoprecipitation



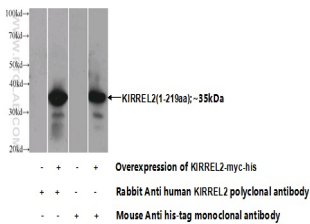
mouse liver tissue were subjected to SDS PAGE followed by western blot with 10890-1-AP(KIRREL2 antibody) at dilution of 1:300

Immunogen information

Immunogen:	Ag1036
GenBank accession number:	BC007312
Gene ID (NCBI):	84063
Full name:	Kin of IRRE like 2 (Drosophila)

Product information

Purification method:	Antigen affinity purification
Storage:	PBS with 0.1% sodium azide and 50% glycerol pH 7.3. Store at -20°C.



Transfected HEK-293 cells were subjected to SDS PAGE followed by western blot with 10890-1-AP(KIRREL2 Antibody) at dilution of 1:1000