

LIMK2 Polyclonal Antibody

Catalog number: 12350-1-AP

Size: 37 µg/150 µl

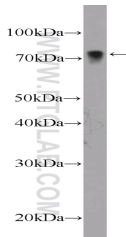
Source: Rabbit

Isotype: IgG

Synonyms:

LIMK2; LIM domain kinase 2,

LIMK 2, LIMK2



NIH/3T3 cells were subjected to SDS PAGE followed by western blot with 12350-1-AP(LIMK2 Antibody) at dilution of 1:600

Background

The family of LIM kinase (LIMK) includes two similar proteins, LIMK1 and LIMK2, that share overall identity of 53% with 75%, 55%, and 42% amino acid identity in the LIM, kinase, and PDZ domains, respectively. LIMK2 regulates actin cytoskeletal reorganization through phosphorylating and inactivating cofilin, an actin-depolymerizing factor of actin filaments. It also may associate with gamma-tubulin and play a role in mitotic spindle assembly. High levels of LIMK2 are evident in uterus, thymus, and spleen whereas lower levels are observed in brain, heart, liver, stomach, skeletal muscle, and testes according to the results of western blotting(PMID:16399995). It has 3 isoforms produced by alternative splicing of the molecular weight of 70-78 kDa. It can be detected a band of 47 kDa or 50-55 kDa in the testes because the antibody is recognizing the testis-specific variant of LIMK2 and the this difference could be due to species variation(PMID:17928627).

Applications

Tested applications:	ELISA, WB
Cited applications:	WB
Species specificity:	Human,Mouse,Rat; other species not tested.
Cited species:	Mouse
Calculated LIMK2 MW:	686aa,78 kDa
Observed LIMK2 MW:	70-80 kDa
Positive WB detected in	NIH/3T3 cells
Recommended dilution:	WB: 1:200-1:2000

Application key: WB = Western blotting, IHC = Immunohistochemistry, IF = Immunofluorescence, IP = Immunoprecipitation

Immunogen information

Immunogen:	Ag3011
GenBank accession number:	BC013051
Gene ID (NCBI):	3985
Full name:	LIM domain kinase 2

Product information

Purification method:	Antigen affinity purification
Storage:	PBS with 0.1% sodium azide and 50% glycerol pH 7.3. Store at -20°C.