

CRIPT Polyclonal Antibody

Catalog number: 11211-1-AP

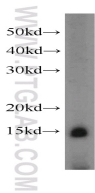
Size: 71 µg/150 µl

Source: Rabbit

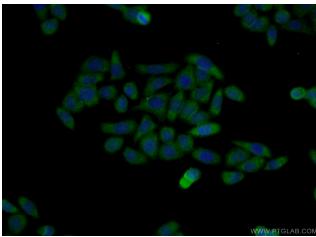
Isotype: IgG

Synonyms:

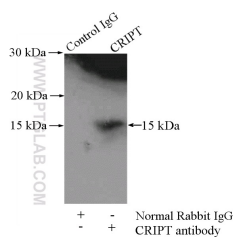
CRIPT; CRIPT, HSPC139



L02 cells were subjected to SDS PAGE followed by western blot with 11211-1-AP (CRIPT antibody) at dilution of 1:500



Immunofluorescent analysis of L02 cells using 11211-1-AP (CRIPT Antibody) at dilution of 1:50 and Alexa Fluor 488-conjugated AffiniPure Goat Anti-Rabbit IgG(H+L)



IP Result of anti-CRIPT (IP:11211-1-AP, 4µg; Detection:11211-1-AP 1:500) with L02 cells lysate 1800µg.

Background

The clustering and immobilization of receptors and ion channels located at specific subcellular sites are believed to be mediated by intracellular proteins that attach these membrane proteins to the cytoskeleton. Receptors and ion channels interact with cytoplasmic proteins, which involved in the modulation or downstream signaling mechanisms of the receptor/ion channel. CRIPT is the protein that binds to the third PDZ (PDZ3) domain of PSD95, which binds to and clusters a variety of membrane proteins, including Shaker-type potassium channel subunits and NMDA receptor NR2 subunits, via its first 2 N-terminal PDZ domains

Applications

Tested applications:	ELISA, WB, IP, IF
Species specificity:	Human, Mouse, Rat; other species not tested.
Calculated CRIPT MW:	11 kDa
Observed CRIPT MW:	15 kDa
Positive WB detected in	L02 cells
Positive IP detected in	L02 cells
Positive IF detected in	L02 cells
Recommended dilution:	WB: 1:200-1:2000
	IP: 1:200-1:2000
	IF: 1:20-1:200

Application key: WB = Western blotting, IHC = Immunohistochemistry, IF = Immunofluorescence, IP = Immunoprecipitation

Immunogen information

Immunogen:	Ag1708
GenBank accession number:	BC018653
Gene ID (NCBI):	9419
Full name:	Cysteine-rich PDZ-binding protein

Product information

Purification method:	Antigen affinity purification
Storage:	PBS with 0.1% sodium azide and 50% glycerol pH 7.3. Store at -20°C.