

PLEK2 Polyclonal Antibody

Catalog number: 11685-1-AP

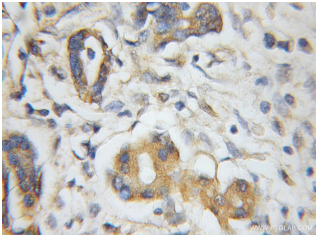
Size: 67 µg/150 µl

Source: Rabbit

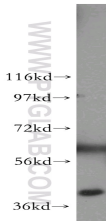
Isotype: IgG

Synonyms:

PLEK2; pleckstrin 2, PLEK2



Immunohistochemical of paraffin-embedded human pancreas cancer using 11685-1-AP (PLEK2 antibody) at dilution of 1:50 (under 10x lens)



PC-3 cells were subjected to SDS PAGE followed by western blot with 11685-1-AP (PLEK2 antibody) at dilution of 1:500

Applications

Tested applications:	ELISA, WB, IHC
Cited applications:	IF, WB
Species specificity:	Human, Mouse, Rat; other species not tested.
Cited species:	Mouse
Calculated PLEK2 MW:	353aa, 40 kDa
Observed PLEK2 MW:	40 kDa
Positive WB detected in:	PC-3 cells
Positive IHC detected in:	Human pancreas cancer tissue, mouse spleen tissue
Recommended dilution:	WB: 1:500-1:5000 IHC: 1:20-1:200

Application key: WB = Western blotting, IHC = Immunohistochemistry, IF = Immunofluorescence, IP = Immunoprecipitation

Immunogen information

Immunogen:	Ag2297
GenBank accession number:	BC001226
Gene ID (NCBI):	26499
Full name:	Pleckstrin 2

Product information

Purification method:	Antigen affinity purification
Storage:	PBS with 0.1% sodium azide and 50% glycerol pH 7.3. Store at -20°C.