

## VGLL1 Polyclonal Antibody

Catalog number: 10124-2-AP

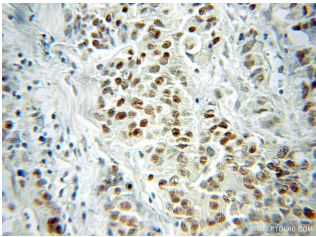
Size: 70 µg/150 µl

Source: Rabbit

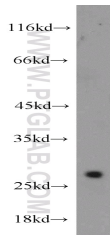
Isotype: IgG

Synonyms:

VGLL1; Protein TONDU, TDU, vestigial like 1 (Drosophila), Vgl 1, VGL1, VGLL1



Immunohistochemical of paraffin-embedded human prostate cancer using 10124-2-AP (VGLL1 antibody) at dilution of 1:50 (under 10x lens)



Jurkat cells were subjected to SDS PAGE followed by western blot with 10124-2-AP (VGLL1 antibody) at dilution of 1:1000

### Background

VGLL1 is a specific coactivator for the mammalian TEFs. It can bind proteins of the TEA domain family of transcription factors. Vgll1-TEFs complex upregulates the expression of IGFBP-5, a proliferation-promoting gene, and facilitates anchorage-independent cell proliferation

### Applications

Tested applications:	ELISA, IHC, WB
Species specificity:	Human; other species not tested.
Calculated VGLL1 MW:	29kd
Observed VGLL1 MW:	26-29 kDa
Positive WB detected in	Jurkat cells, human brain tissue, PC-3 cells
Positive IHC detected in	Human prostate cancer tissue
Recommended dilution:	WB: 1:500 - 1:2000 IHC: 1:25 - 1:100

Application key: WB = Western blotting, IHC = Immunohistochemistry, IF = Immunofluorescence, IP = Immunoprecipitation

### Immunogen information

Immunogen:	Ag0169
GenBank accession number:	BC000045
Gene ID (NCBI):	51442
Full name:	Vestigial like 1 (Drosophila)

### Product information

Purification method:	Antigen affinity purification
Storage:	PBS with 0.1% sodium azide and 50% glycerol pH 7.3. Store at -20°C.