

RAD51L1 Polyclonal Antibody

Catalog number: 13555-1-AP

Size: 31 µg/150 µl

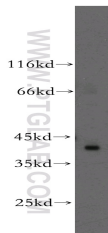
Source: Rabbit

Isotype: IgG

Synonyms:

RAD51L1; MGC34245; R51H2;

RAD51B; REC2; hREC2



HeLa cells were subjected to SDS PAGE followed by western blot with 13555-1-AP (RAD51L1 Antibody) at dilution of 1:1000

Applications

| | |
|--------------------------|--|
| Tested applications: | ELISA, WB |
| Species specificity: | Human, mouse, rat; other species not tested. |
| Positive WB detected in: | HeLa cells |
| Calculated RAD51L1 MW: | 384aa, 42kd |
| Observed RAD51L1 MW: | 42kd |
| Recommended dilution: | WB: 1:500-1:5000 |

Application key: WB = Western blotting, IHC = Immunohistochemistry, IF = Immunofluorescence, IP = Immunoprecipitation, FC = Flow cytometry

Immunogen information

| | |
|---------------------------|------------------------------|
| Immunogen: | Ag4412 |
| GenBank accession number: | BC030219 |
| Gene ID (NCBI): | 5890 |
| Full name: | RAD51-like 1 (S. cerevisiae) |

Product information

| | |
|----------------------|--|
| Purification method: | Antigen affinity purification |
| Storage: | PBS with 0.02% sodium azide and 50% glycerol pH 7.3. Store at -20°C. |