

LMBR1L Polyclonal Antibody

Catalog number: 12154-1-AP

Size: 20 µg/150 µl

Source: Rabbit

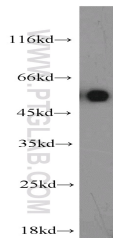
Isotype: IgG

Synonyms:

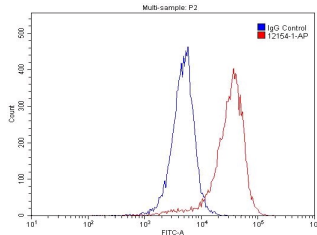
LMBR1L; FLJ10494, FLJ36251,

KIAA1174, LIMR, LMBR1L,

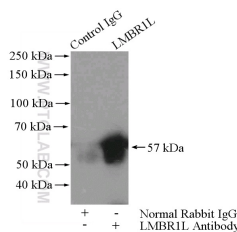
Protein LMBR1L



mouse testis tissue were subjected to SDS PAGE followed by western blot with 12154-1-AP(LMBR1L antibody) at dilution of 1:600



1X10⁶ A549 cells were stained with 0.2µg LMBR1L antibody (12154-1-AP, red) and control antibody (blue). Fixed with 4% PFA blocked with 3% BSA (30 min). Alexa Fluor 488-conjugated AffiniPure Goat Anti-Rabbit IgG(H+L) with dilution 1:1500.



IP Result of anti-LMBR1L (IP:12154-1-AP, 4µg; Detection:12154-1-AP 1:500) with HepG2 cells lysate 3200µg.

Background

LMBR1L, also known as LIMR (lipocalin-1-interacting membrane receptor), interacts with lipocalin-1 (Lcn-1), a lipocalin member produced by a number of secretoric glands and tissues and known to bind a variety of lipophilic compounds. LMBR1L is a 489-amino acid protein with a predicted molecular mass of 55 kDa and 9 putative transmembrane helices. LMBR1L has been shown to mediate cellular uptake of LMBR1L, thus it is characterized as a endocytic receptor. (PMID: 11287427; 12591932)

Applications

Tested applications:	ELISA, IP, WB, FC
Species specificity:	Human, Mouse, Rat; other species not tested.
Calculated LMBR1L MW:	489aa,55 kDa
Observed LMBR1L MW:	57 kDa
Positive WB detected in	Mouse testis tissue, A549 cells, HepG2 cells, mouse liver tissue, rat testis tissue
Positive IP detected in	HepG2 cells
Positive FC detected in	A549 cells
Recommended dilution:	WB: 1:200-1:2000 IP: 1:200-1:2000 FC: N/A

Application key: WB = Western blotting, IHC = Immunohistochemistry, IF = Immunofluorescence, IP = Immunoprecipitation

Immunogen information

Immunogen:	Ag2787
GenBank accession number:	BC015015
Gene ID (NCBI):	55716
Full name:	Limb region 1 homolog (mouse)-like

Product information

Purification method:	Antigen affinity purification
Storage:	PBS with 0.1% sodium azide and 50% glycerol pH 7.3. Store at -20°C.