

## PPAN Polyclonal Antibody

Catalog number: 11006-1-AP

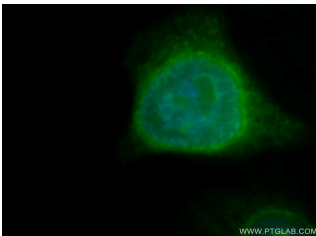
Size: 49 µg/150 µl

Source: Rabbit

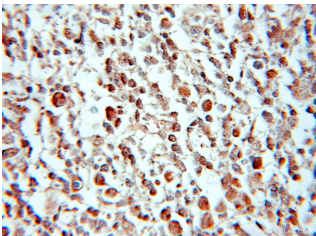
Isotype: IgG

Synonyms:

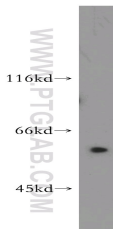
PPAN; BXDC3, Peter Pan homolog, peter pan homolog (Drosophila), PPAN, SSF, Ssf 1, SSF1, SSF2, Suppressor of SWI4 1 homolog



Immunofluorescent analysis of MCF-7 cells, using 11006-1-AP and FITC-labeled donkey anti-rabbit IgG (green). Blue pseudocolor = DAPI (fluorescent DNA dye).



Immunohistochemical of paraffin-embedded human lymphoma using 11006-1-AP (PPAN antibody) at dilution of 1:50 (under 10x lens)



mouse heart tissue were subjected to SDS PAGE followed by western blot with 11006-1-AP (PPAN antibody) at dilution of 1:800

### Background

PPAN (or SSF, SSF1 or SSF2) gene is widely expressed, and encodes peter pan homolog protein which may be localized in nucleus. Two isoforms are produced through alternative splicing. So far the characterization of this protein is largely unknown, multiple phosphorylation sites has been revealed based on high-throughput phosphorylation analysis. This antibody is raised against the C-terminal of human PPAN and recognize bands around 55 kDa.

### Applications

Tested applications:	ELISA, WB, IHC, IF
Cited applications:	IF, IHC, IP, WB
Species specificity:	Human, Mouse, Rat; other species not tested.
Cited species:	Human, xenopus
Calculated PPAN MW:	53 kDa
Observed PPAN MW:	55-58 kDa
Positive WB detected in	Mouse heart tissue, rat heart tissue
Positive IHC detected in	Human lymphoma tissue
Positive IF detected in	MCF-7 cells
Recommended dilution:	WB: 1:200-1:2000
	IHC: 1:20-1:200
	IF: 1:20-1:200

Application key: WB = Western blotting, IHC = Immunohistochemistry, IF = Immunofluorescence, IP = Immunoprecipitation

### Immunogen information

Immunogen:	Ag1419
GenBank accession number:	BC009833
Gene ID (NCBI):	56342
Full name:	Peter pan homolog (Drosophila)

### Product information

Purification method:	Antigen affinity purification
Storage:	PBS with 0.1% sodium azide and 50% glycerol pH 7.3. Store at -20°C.