

PSMB6 Polyclonal Antibody

Catalog number: 11684-2-AP

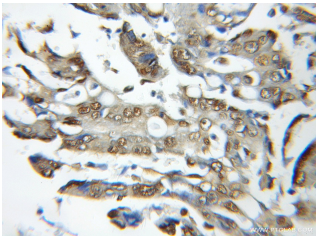
Size: 34 µg/150 µl

Source: Rabbit

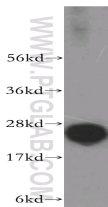
Isotype: IgG

Synonyms:

PSMB6; 20S proteasome,
DELTA, LMPY, Macropain delta
chain, Proteasome delta chain,
Proteasome subunit beta type
6, Proteasome subunit Y,
PSMB6, Y



Immunohistochemical of paraffin-embedded human colon cancer using 11684-2-AP(PSMB6 antibody) at dilution of 1:50 (under 40x lens)



human brain tissue were subjected to SDS PAGE followed by western blot with 11684-2-AP(PSMB6 antibody) at dilution of 1:500

Background

PSMB6(Proteasome subunit beta type-6) is also named as LMPY, Y and belongs to the peptidase T1B family. The proteasome is a multicatalytic proteinase complex which is characterized by its ability to cleave peptides with Arg, Phe, Tyr, Leu, and Glu adjacent to the leaving group at neutral or slightly basic pH. It may also catalyze basal processing of intracellular antigens. It can be up-regulated in anaplastic thyroid cancer cell lines and down-regulated by IFNG/IFN-gamma (at protein level)(PMID:8066462;15613457).

Applications

Tested applications:	ELISA, WB, IHC
Species specificity:	Human, Mouse, Rat; other species not tested.
Calculated PSMB6 MW:	239aa, 25 kDa
Observed PSMB6 MW:	25kd
Positive WB detected in	Human brain tissue, HeLa cells, human liver tissue
Positive IHC detected in	Human colon cancer tissue, human gliomas tissue
Recommended dilution:	WB: 1:500-1:5000 IHC: 1:20-1:200

Application key: WB = Western blotting, IHC = Immunohistochemistry, IF = Immunofluorescence, IP = Immunoprecipitation

Immunogen information

Immunogen:	Ag2296
GenBank accession number:	BC000835
Gene ID (NCBI):	5694
Full name:	Proteasome (prosome, macropain) subunit, beta type, 6

Product information

Purification method:	Antigen affinity purification
Storage:	PBS with 0.1% sodium azide and 50% glycerol pH 7.3. Store at -20°C.