

IDI1 Polyclonal Antibody

Catalog number: 11166-2-AP

Size: 22 µg/150 µl

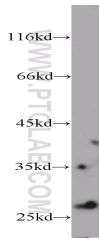
Source: Rabbit

Isotype: IgG

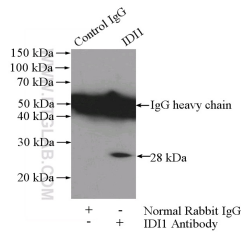
Synonyms:

IDI1; IDI1, IPP isomerase 1,

IPP1, IPP11



mouse liver tissue were subjected to SDS PAGE followed by western blot with 11166-2-AP (IDI1 antibody) at dilution of 1:300



IP Result of anti-IDI1 (IP:11166-2-AP, 4ug; Detection:11166-2-AP 1:300) with mouse liver tissue lysate 4000ug.

Background

IDI1 (Isopentenyl-diphosphate Delta-isomerase 1) is a peroxisomally-localized enzyme that catalyzes the interconversion of isopentenyl diphosphate (IPP) to its highly electrophilic isomer, dimethylallyl diphosphate (DMAPP). It belongs to the IPP isomerase type 1 family. This protein has 2 isoforms produced by alternative splicing with the molecular weight of 26 kDa and 32 kDa.

Applications

Tested applications:	ELISA, WB, IP
Cited applications:	WB
Species specificity:	Human, Mouse, Rat; other species not tested.
Cited species:	Human
Calculated IDI1 MW:	31 kDa
Observed IDI1 MW:	28 kDa
Positive WB detected in	Mouse liver tissue, human liver tissue, L02 cells
Positive IP detected in	Mouse liver tissue
Recommended dilution:	WB: 1:200-1:1000 IP: 1:200-1:1000

Application key: WB = Western blotting, IHC = Immunohistochemistry, IF = Immunofluorescence, IP = Immunoprecipitation

Immunogen information

Immunogen:	Ag1636
GenBank accession number:	BC019227
Gene ID (NCBI):	3422
Full name:	Isopentenyl-diphosphate delta isomerase 1

Product information

Purification method:	Antigen affinity purification
Storage:	PBS with 0.1% sodium azide and 50% glycerol pH 7.3. Store at -20°C.