

## BEX2 Polyclonal Antibody

Catalog number: 12390-1-AP

Size: 28 µg/150 µl

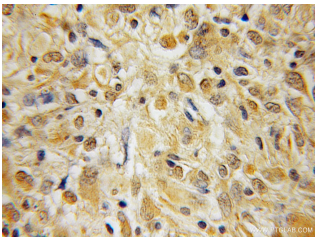
Source: Rabbit

Isotype: IgG

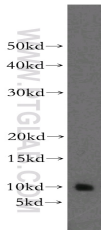
Synonyms:

BEX2; BEX1, BEX2, brain  
expressed X linked 2,

DJ79P11.1, hBex2, Protein  
BEX2



Immunohistochemical of paraffin-embedded human medulloblastoma using 12390-1-AP(BEX2 antibody) at dilution of 1:100 (under 10x lens)



human brain tissue were subjected to SDS PAGE followed by western blot with 12390-1-AP(BEX2 antibody) at dilution of 1:500

### Applications

Tested applications:	ELISA, WB, IHC
Species specificity:	Human, Mouse, Rat; other species not tested.
Calculated BEX2 MW:	128aa, 15kd
Observed BEX2 MW:	10-15kd
Positive WB detected in	Human brain tissue
Positive IHC detected in	Human medulloblastoma tissue
Recommended dilution:	WB: 1:300 - 1:1200 IHC: 1:50 - 1:200

Application key: WB = Western blotting, IHC = Immunohistochemistry, IF = Immunofluorescence, IP = Immunoprecipitation

### Immunogen information

Immunogen:	Ag3066
GenBank accession number:	BC015522
Gene ID (NCBI):	84707
Full name:	Brain expressed X-linked 2

### Product information

Purification method:	Antigen affinity purification
Storage:	PBS with 0.02% sodium azide and 50% glycerol pH 7.3. Store at -20°C.