

UBE2A Polyclonal Antibody

Catalog number: 11080-1-AP

Size: 30 µg/150 µl

Source: Rabbit

Isotype: IgG

Synonyms:

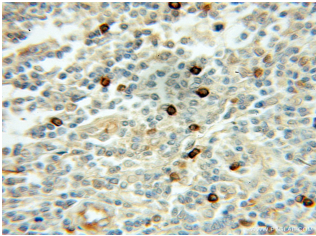
UBE2A; HHR6A, HR6A, RAD6

homolog A, RAD6A, UBC2,

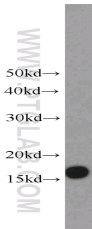
UBE2A, Ubiquitin carrier

protein A, Ubiquitin protein

ligase A



Immunohistochemical of paraffin-embedded human lymphoma using 11080-1-AP(UBE2A antibody) at dilution of 1:50 (under 10x lens)



HEK-293 cells were subjected to SDS PAGE followed by western blot with 11080-1-AP(UBE2A antibody) at dilution of 1:600

Background

UBE2A(Ubiquitin-conjugating enzyme E2 A) serves as the cognate E2-conjugating enzyme. It plays a critical role in regulating TP53 protein levels under both normal and stress conditions. UBE2A, UBE2B regulates TP53 levels in a "yin-yang" manner through a combination of two distinct mechanisms in mammalian cells(PMID:22083959). This protein has 3 isoforms produced by alternative splicing.

Applications

| | |
|--------------------------|---|
| Tested applications: | ELISA, WB, IHC |
| Cited applications: | WB |
| Species specificity: | Human, Mouse, Rat; other species not tested. |
| Cited species: | Human |
| Calculated UBE2A MW: | 17 kDa |
| Observed UBE2A MW: | 17 kDa |
| Positive WB detected in | HEK-293 cells, COLO 320 cells, human kidney tissue, human placenta tissue |
| Positive IHC detected in | Human lymphoma tissue |
| Recommended dilution: | WB: 1:200-1:2000 IHC: 1:20-1:200 |

Application key: WB = Western blotting, IHC = Immunohistochemistry, IF = Immunofluorescence, IP = Immunoprecipitation

Immunogen information

| | |
|---------------------------|---|
| Immunogen: | Ag1567 |
| GenBank accession number: | BC010175 |
| Gene ID (NCBI): | 7319 |
| Full name: | Ubiquitin-conjugating enzyme E2A (RAD6 homolog) |

Product information

| | |
|----------------------|---|
| Purification method: | Antigen affinity purification |
| Storage: | PBS with 0.1% sodium azide and 50% glycerol pH 7.3. Store at -20°C. |