

CREB3L1,OASIS Polyclonal Antibody

Catalog number: 11235-2-AP

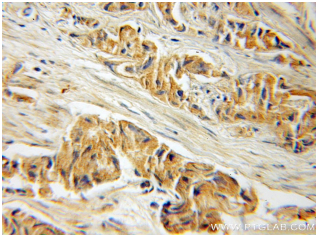
Size: 42 µg/150 µl

Source: Rabbit

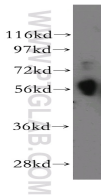
Isotype: IgG

Synonyms:

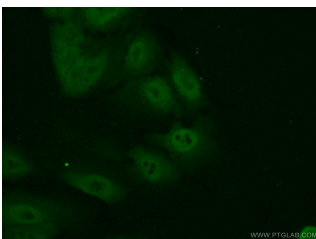
CREB3L1; CREB3L1, OASIS



Immunohistochemical of paraffin-embedded human prostate cancer using 11235-2-AP(CREB3L1,OASIS antibody) at dilution of 1:50 (under 25x lens)



A549 cells were subjected to SDS PAGE followed by western blot with 11235-2-AP(CREB3L1,OASIS antibody) at dilution of 1:300



Immunofluorescent analysis of (10% Formaldehyde) fixed A549 cells using 11235-2-AP(CREB3L1,OASIS Antibody) at dilution of 1:50 and Alexa Fluor 488-conjugated AffiniPure Goat Anti-Rabbit IgG(H+L)

Background

Cyclic AMP-responsive element-binding protein 3-like protein 1(CREB3L1) belongs to a family of transcription factors that are synthesized as membrane-bound precursors in the endoplasmic reticulum (ER) and then transported to the Golgi where they are activated through regulated intramembrane proteolysis (RIP). Also it participates in ER-stress response in astrocytes in the central nervous system. It may have a role in gliosis, and involves in activation of transcription through box-B element but not CRE. CREB3L1 acts as a transcription repressor in proliferation of virus-infected cell.

Applications

Tested applications:	ELISA, WB, IHC, IF
Cited applications:	WB
Species specificity:	Human,Mouse,Rat; other species not tested.
Cited species:	Human, rat
Calculated CREB3L1,OASIS MW:	57 kDa
Observed CREB3L1,OASIS MW:	57 kDa
Positive WB detected in	A549 cells, COLO 320 cells
Positive IHC detected in	Human prostate cancer tissue
Positive IF detected in	A549 cells
Recommended dilution:	WB: 1:200-1:2000 IHC: 1:20-1:200 IF: 1:50-1:500

Application key: WB = Western blotting, IHC = Immunohistochemistry, IF = Immunofluorescence, IP = Immunoprecipitation

Immunogen information

Immunogen:	Ag1757
GenBank accession number:	BC015781
Gene ID (NCBI):	90993
Full name:	CAMP responsive element binding protein 3-like 1

Product information

Purification method:	Antigen affinity purification
Storage:	PBS with 0.1% sodium azide and 50% glycerol pH 7.3. Store at -20°C.