

p107 Polyclonal Antibody

Catalog number: 13354-1-AP

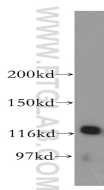
Size: 20 µg/150 µl

Source: Rabbit

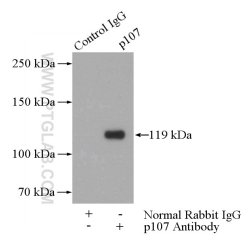
Isotype: IgG

Synonyms:

RBL1; CP107, p107, PRB1, RBL1, retinoblastoma like 1 (p107), Retinoblastoma like protein 1



mouse testis tissue were subjected to SDS PAGE followed by western blot with 13354-1-AP(RBL1 antibody) at dilution of 1:500



IP Result of anti-RBL1 (IP:13354-1-AP, 4µg; Detection:13354-1-AP 1:500) with mouse testis tissue lysate 4000µg.

Background

Retinoblastoma-like protein 1, also named RBL1, p107, is a member of E1A-binding proteins, which contains a A/B pocket, or pRb. Via this structure, RBL1 can bind to viral oncoproteins and other proteins containing LXCXE motif. It regulates cell proliferation via phosphorylation-sensitive interactions with E2F transcription factors and other proteins. Key regulator of entry into cell division. Directly involved in heterochromatin formation by maintaining overall chromatin structure and, in particular, that of constitutive heterochromatin by stabilizing histone methylation. Recruits and targets histone methyltransferases SUV420H1 and SUV420H2, leading to epigenetic transcriptional repression.(uniprot). It has been reported there are two transcripts variants of RBL1, which encode a 119-kd protein and a 68-kd protein(PMID:7490090).

Applications

Tested applications:	ELISA, WB, IP
Cited applications:	WB
Species specificity:	Human,Mouse,Rat; other species not tested.
Cited species:	Human
Calculated p107 MW:	1068aa,119 kDa
Observed p107 MW:	119 kDa
Positive WB detected in	Mouse testis tissue, COLO 320 cells
Positive IP detected in	Mouse testis tissue
Recommended dilution:	WB: 1:500-1:5000 IP: 1:200-1:2000

Application key: WB = Western blotting, IHC = Immunohistochemistry, IF = Immunofluorescence, IP = Immunoprecipitation

Immunogen information

Immunogen:	Ag4146
GenBank accession number:	BC032247
Gene ID (NCBI):	5933
Full name:	Retinoblastoma-like 1 (p107)

Product information

Purification method:	Antigen affinity purification
Storage:	PBS with 0.02% sodium azide and 50% glycerol pH 7.3. Store at -20°C.