

GSDMB Polyclonal Antibody

Catalog number: 12885-1-AP

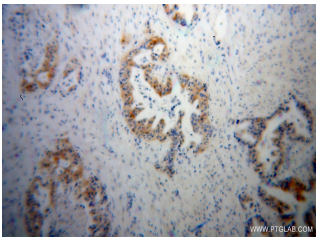
Size: 20 µg/150 µl

Source: Rabbit

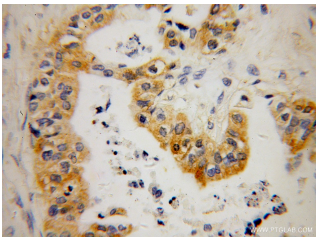
Isotype: IgG

Synonyms:

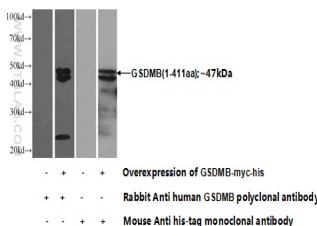
GSDMB; gasdermin B,
Gasdermin like protein,
GSDMB, GSDML, PP4052,
PRO2521



Immunohistochemical of paraffin-embedded human stomach cancer using 12885-1-AP (GSDMB antibody) at dilution of 1:50 (under 10x lens)



Immunohistochemical of paraffin-embedded human stomach cancer using 12885-1-AP (GSDMB antibody) at dilution of 1:50 (under 40x lens)



Transfected HEK-293 cells were subjected to SDS PAGE followed by western blot with 12885-1-AP (GSDMB Antibody) at dilution of 1:1000

Applications

| | |
|---------------------------------|---|
| Tested applications: | ELISA, IHC, WB |
| Species specificity: | Human; other species not tested. |
| Calculated GSDMB MW: | 411aa, 47kd |
| Observed GSDMB MW: | 47 kDa |
| Positive WB detected in | Transfected HEK-293 cells, COLO 320 cells, PC-3 cells |
| Positive IHC detected in | Human stomach cancer tissue |
| Recommended dilution: | WB: 1:500-1:5000 IHC: 1:20-1:200 |

Application key: WB = Western blotting, IHC = Immunohistochemistry, IF = Immunofluorescence, IP = Immunoprecipitation

Immunogen information

| | |
|----------------------------------|-------------|
| Immunogen: | Ag3895 |
| GenBank accession number: | BC025682 |
| Gene ID (NCBI): | 55876 |
| Full name: | Gasdermin B |

Product information

| | |
|-----------------------------|--|
| Purification method: | Antigen affinity purification |
| Storage: | PBS with 0.02% sodium azide and 50% glycerol pH 7.3. Store at -20°C. |