

## CHRNA1 Polyclonal Antibody

Catalog number: 10613-1-AP

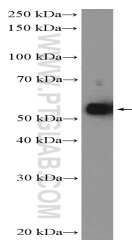
Size: 30 µg/150 µl

Source: Rabbit

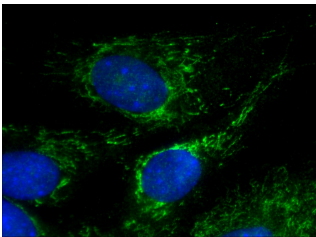
Isotype: IgG

Synonyms:

CHRNA1; ACHRA, ACHRD,  
CHNRA, CHRNA, CHRNA1,  
CMS2A, FCCMS, nAChRA1,  
SCCMS



mouse heart tissue were subjected to SDS PAGE followed by western blot with 10613-1-AP( CHRNA1 Antibody) at dilution of 1:300



Immunofluorescent analysis of ( -20 Ethanol ) fixed C2C12 cell using 10613-1-AP( CHRNA1 Antibody) at dilution of 1:50 and Alexa Fluor 488-conjugated AffiniPure Goat Anti-Rabbit IgG(H+L)



Immunohistochemistry of paraffin-embedded human skeletal muscle tissue slide using 10613-1-AP( CHRNA1 Antibody) at dilution of 1:50 (under 10x lens)

### Applications

Tested applications:	ELISA, IHC, WB, IF
Species specificity:	Human, Mouse, Rat; other species not tested.
Calculated CHRNA1 MW:	54.5 kDa
Observed CHRNA1 MW:	54 kDa
Positive WB detected in	Mouse heart tissue, rat brain tissue
Positive IHC detected in	Human skeletal muscle tissue, human heart tissue
Positive IF detected in	C2C12 cell
Recommended dilution:	WB: 1:200-1:1000
	IHC: 1:20-1:200
	IF: 1:50-1:500

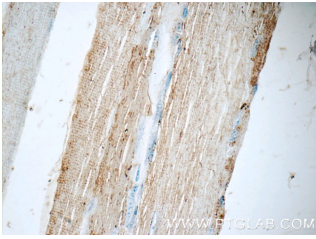
Application key: WB = Western blotting, IHC = Immunohistochemistry, IF = Immunofluorescence, IP = Immunoprecipitation

### Immunogen information

Immunogen:	Ag0933
GenBank accession number:	BC006314
Gene ID (NCBI):	1134
Full name:	Cholinergic receptor, nicotinic, alpha 1 (muscle)

### Product information

Purification method:	Antigen affinity purification
Storage:	PBS with 0.1% sodium azide and 50% glycerol pH 7.3. Store at -20°C.



**Immunohistochemistry of  
paraffin-embedded human  
skeletal muscle tissue slide  
using 10613-1-AP ( CHRNA1  
Antibody) at dilution of 1:50  
(under 40x lens)**