

WFDC1 Polyclonal Antibody

Catalog number: 13204-1-AP

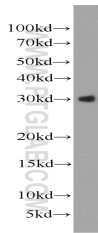
Size: 65 µg/150 µl

Source: Rabbit

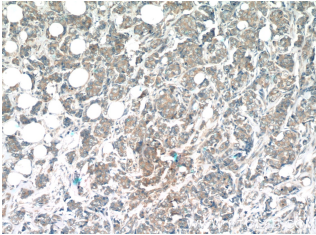
Isotype: IgG

Synonyms:

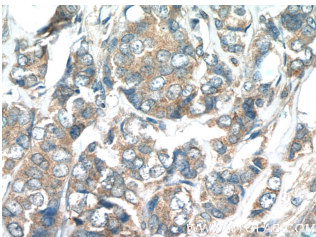
WFDC1; Prostate stromal protein ps20, PS20, ps20 growth inhibitor, WFDC1



HEK-293 cells were subjected to SDS PAGE followed by western blot with 13204-1-AP(WFDC1 antibody) at dilution of 1:1000



Immunohistochemistry of paraffin-embedded human breast cancer tissue slide using 13204-1-AP(WFDC1 Antibody) at dilution of 1:50 (under 10x lens)



Immunohistochemistry of paraffin-embedded human breast cancer tissue slide using 13204-1-AP(WFDC1 Antibody) at dilution of 1:50 (under 40x lens)

Applications

Tested applications:	ELISA, WB, IHC
Species specificity:	Human; other species not tested.
Calculated WFDC1 MW:	220aa,24 kDa
Observed WFDC1 MW:	29 kDa
Positive WB detected in	HEK-293 cells, PC-3 cells
Positive IHC detected in	Human breast cancer tissue, human small intestine tissue
Recommended dilution:	WB: 1:200-1:2000 IHC: 1:20-1:200

Application key: WB = Western blotting, IHC = Immunohistochemistry, IF = Immunofluorescence, IP = Immunoprecipitation

Immunogen information

Immunogen:	Ag3960
GenBank accession number:	BC029159
Gene ID (NCBI):	58189
Full name:	WAP four-disulfide core domain 1

Product information

Purification method:	Antigen affinity purification
Storage:	PBS with 0.02% sodium azide and 50% glycerol pH 7.3. Store at -20°C.