

APOL1 Polyclonal Antibody

Catalog number: 11486-2-AP

Size: 66 µg/150 µl

Source: Rabbit

Isotype: IgG

Synonyms:

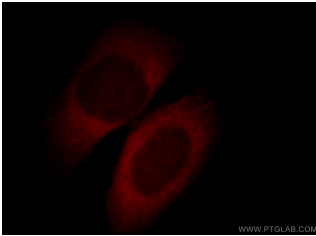
APOL1; APO L, APOL, APOL I,

APOL1, Apolipoprotein L,

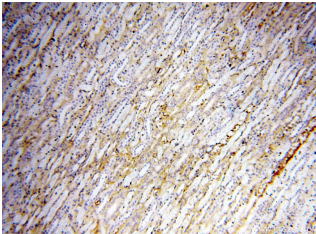
Apolipoprotein L I,

apolipoprotein L, 1,

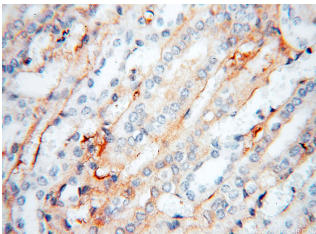
Apolipoprotein L1



Immunofluorescent analysis of HepG2 cells, using APOL1 antibody 11486-1-AP at 1:25 dilution and Rhodamine-labeled goat anti-rabbit IgG (red).



Immunohistochemical of paraffin-embedded human kidney using 11486-2-AP (APOL1 antibody) at dilution of 1:50 (under 10x lens)



Immunohistochemical of paraffin-embedded human kidney using 11486-2-AP (APOL1 antibody) at dilution of 1:50 (under 40x lens)

Background

Human apolipo-protein L1 (APOL1) is a minor component of plasma high density lipoprotein (HDL) particles, acting as an interacting protein of apolipoprotein A1 (ApoA1). The human ApoL protein family was thought to be predominantly involved in lipid transport and metabolism. APOL1 is also involved in host innate immunity against Trypanosoma parasites. Once activated, APOL1 can lyse the parasite and protect human from infection. Genetic variants in APOL1 gene, which are found in African ancestry with high frequency, associate with chronic kidney disease, like focal segmental glomerulosclerosis (FSGS), HIV-associated nephropathy (HIVAN), and hypertensive nephropathy. APOL1 share structural and functional similarities with proteins of the Bcl-2 family and may have roles in apoptosis and autophagy. It is notable that APOL1 exists only in human and a few other primate species, and mouse does not express an APOL1 orthologue. This antibody recognizes the endogenous APOL1 of 39-45 kDa in blood lysate.

Applications

Tested applications:	ELISA, WB, IHC, IF, IP, FC
Cited applications:	WB
Species specificity:	Human; other species not tested.
Cited species:	Human, mouse
Calculated APOL1 MW:	44 kDa
Observed APOL1 MW:	39 kDa
Positive WB detected in	Human blood tissue, A2780 cells, A549 cells, HeLa cells, HepG2 cells, MCF7 cells, SKOV-3 cells, SW 1990 cells
Positive IP detected in	HepG2 cells
Positive IHC detected in	Human kidney tissue, human liver tissue, human pancreas tissue, human spleen tissue, human testis tissue
Positive IF detected in	HepG2 cells
Positive FC detected in	HepG2 cells
Recommended dilution:	WB: 1:200-1:2000 IP: 1:200-1:2000 IHC: 1:20-1:200 IF: 1:10-1:100 FC: N/A

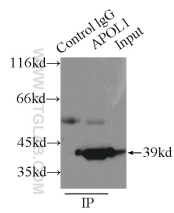
Application key: WB = Western blotting, IHC = Immunohistochemistry, IF = Immunofluorescence, IP = Immunoprecipitation

Immunogen information

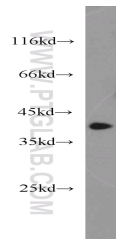
Immunogen:	Ag2016
GenBank accession number:	BC017331
Gene ID (NCBI):	8542
Full name:	Apolipoprotein L, 1

Product information

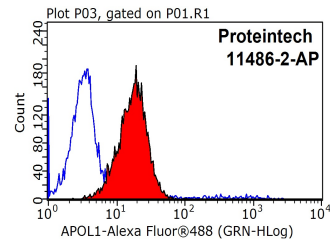
Purification method:	Antigen affinity purification
Storage:	PBS with 0.1% sodium azide and 50% glycerol pH 7.3. Store at -20°C.



**IP Result of anti-APOL1
(IP:11486-2-AP, 3ug;
Detection:11486-2-AP 1:500)
with HepG2 cells lysate
6000ug.**



**human blood tissue were
subjected to SDS PAGE
followed by western blot with
11486-2-AP(APOL1 antibody)
at dilution of 1:1000**



**1X10⁶ HepG2 cells were
stained with 0.2ug APOL1
antibody (11486-2-AP, red)
and control antibody (blue).
Fixed with 90% MeOH
blocked with 3% BSA (30
min). Alexa Fluor 488-
conjugated AffiniPure Goat
Anti-Rabbit IgG(H+L) with
dilution 1:1000.**