

TMS1 Polyclonal Antibody

Catalog number: 10500-1-AP

Size: 60 µg/150 µl

Source: Rabbit

Isotype: IgG

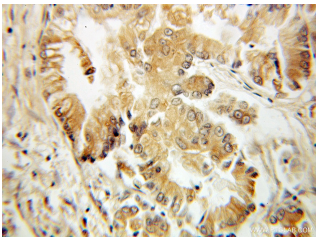
Synonyms:

PYCARD; ASC, CARD5, hASC,

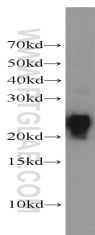
PYCARD, PYD and CARD

domain containing, TMS, TMS

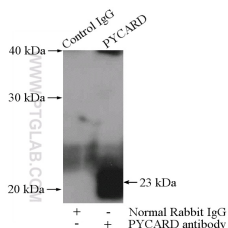
1, TMS1



Immunohistochemical of paraffin-embedded human lung cancer using 10500-1-AP(TMS1 antibody) at dilution of 1:100 (under 10x lens)



HL-60 cells were subjected to SDS PAGE followed by western blot with 10500-1-AP(TMS1 antibody) at dilution of 1:1000



IP Result of anti-TMS1 (IP:10500-1-AP, 4µg; Detection:10500-1-AP 1:2000) with HL-60 cells lysate 4000µg.

Background

PYCARD, also known as ASC or TMS1, is a 195 amino acid protein containing an N-terminal Pyrin-like domain (PYD) and an 87 residue C-terminal Caspase-associated recruitment domain (CARD). It promotes caspase-mediated apoptosis which is mediated predominantly through the activation of caspase-9.

Applications

Tested applications:	ELISA, WB, IHC, IP
Cited applications:	IHC, WB
Species specificity:	Human, Mouse; other species not tested.
Cited species:	Human
Calculated TMS1 MW:	25 kDa
Observed TMS1 MW:	22-25 kDa
Positive WB detected in	HL-60 cells, A549 cells, Raji cells, U-937 cells
Positive IP detected in	HL-60 cells
Positive IHC detected in	Human lung cancer tissue
Recommended dilution:	WB: 1:500-1:5000
	IP: 1:1000-1:10000
	IHC: 1:20-1:200

Application key: WB = Western blotting, IHC = Immunohistochemistry, IF = Immunofluorescence, IP = Immunoprecipitation

Immunogen information

Immunogen:	Ag0774
GenBank accession number:	BC004470
Gene ID (NCBI):	29108
Full name:	PYD and CARD domain containing

Product information

Purification method:	Antigen affinity purification
Storage:	PBS with 0.1% sodium azide and 50% glycerol pH 7.3. Store at -20°C.