

PPFIBP2 Polyclonal Antibody

Catalog number: 13953-1-AP

Size: 46 µg/150 µl

Source: Rabbit

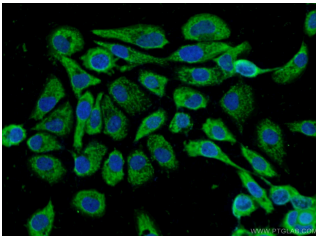
Isotype: IgG

Synonyms:

PPFIBP2; Cclp1,

DKFZp781K06126, Liprin beta 2,

PPFIBP2



Immunofluorescent analysis of A431 cells using 13953-1-AP (PPFIBP2 Antibody) at dilution of 1:25 and Alexa Fluor 488-conjugated AffiniPure Goat Anti-Rabbit IgG(H+L)

Applications

Tested applications:	ELISA, IF
Cited applications:	IF, WB
Species specificity:	Human, Mouse, Rat; other species not tested.
Cited species:	Human
Calculated PPFIBP2 MW:	99 kDa
Observed PPFIBP2 MW:	
Positive IF detected in	A431 cells
Recommended dilution:	IF: 1:10-1:100

Application key: WB = Western blotting, IHC = Immunohistochemistry, IF = Immunofluorescence, IP = Immunoprecipitation

Immunogen information

Immunogen:	Ag5064
GenBank accession number:	BC021714
Gene ID (NCBI):	8495
Full name:	PTPRF interacting protein, binding protein 2 (liprin beta 2)

Product information

Purification method:	Antigen affinity purification
Storage:	PBS with 0.1% sodium azide and 50% glycerol pH 7.3. Store at -20°C.