

TGM1 Polyclonal Antibody

Catalog number: 12912-3-AP

Size: 20 µg/150 µl

Source: Rabbit

Isotype: IgG

Synonyms:

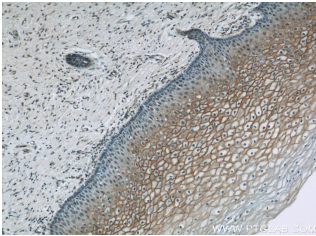
TGM1; Epidermal TGase, ICR2,

KTG, LI, LI1, TG(K), TGASE,

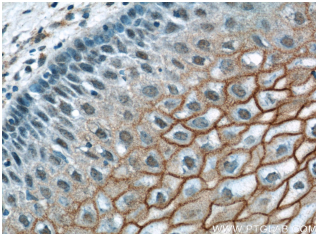
TGase 1, TGase K, TGK, TGM1,

Transglutaminase 1,

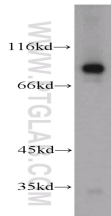
Transglutaminase K



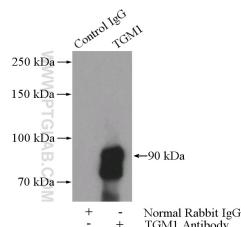
Immunohistochemical of paraffin-embedded human cervix using 12912-3-AP(TGM1 antibody) at dilution of 1:200 (under 10x lens)



Immunohistochemical of paraffin-embedded human cervix using 12912-3-AP(TGM1 antibody) at dilution of 1:200 (under 40x lens)



mouse kidney tissue were subjected to SDS PAGE followed by western blot with 12912-3-AP(TGM1 antibody) at dilution of 1:500



Background

Transglutaminase 1 is an epidermal enzyme that is expressed during the terminal differentiation of keratinized squamous epithelium to form cornified cell envelope in differentiated keratinocytes. Mutation of TGM1 has been linked to various epidermal diseases. This antibody recognizes the endogenous 90 kDa TGM1 proteins.

Applications

Tested applications:	ELISA, IP, WB, IHC
Cited applications:	WB
Species specificity:	Human, Mouse, Rat; other species not tested.
Cited species:	Human
Calculated TGM1 MW:	817aa, 90 kDa
Observed TGM1 MW:	90kd
Positive WB detected in	Mouse kidney tissue, mouse thymus tissue
Positive IP detected in	Mouse kidney tissue
Positive IHC detected in	Human cervix tissue, human cervical cancer tissue, human skin tissue
Recommended dilution:	WB: 1:200-1:2000 IP: 1:500-1:5000 IHC: 1:50-1:600

Application key: WB = Western blotting, IHC = Immunohistochemistry, IF = Immunofluorescence, IP = Immunoprecipitation

Immunogen information

Immunogen:	Ag3905
GenBank accession number:	BC034699
Gene ID (NCBI):	7051
Full name:	Transglutaminase 1 (K polypeptide epidermal type I, protein-glutamine-gamma-glutamyltransferase)

Product information

Purification method:	Antigen affinity purification
Storage:	PBS with 0.1% sodium azide and 50% glycerol pH 7.3. Store at -20°C.

**IP Result of anti-TGM1
(IP:12912-3-AP, 4ug;
Detection:12912-3-AP 1:1000)
with mouse kidney tissue
lysate 4000ug.**