

IPO13 Polyclonal Antibody

Catalog number: 11696-2-AP

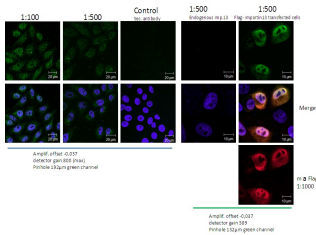
Size: 20 µg/150 µl

Source: Rabbit

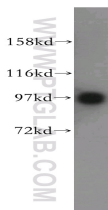
Isotype: IgG

Synonyms:

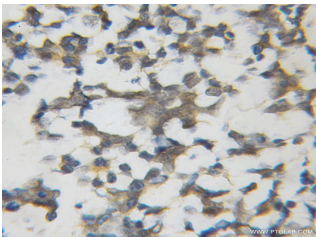
IPO13; IMP13, importin 13,
IPO13, KAP13, Karyopherin 13,
KIAA0724, LGL2, Ran binding
protein 13, RANBP13



IF result in HeLa cell from Dr. Ralph Kehlenbach showed Nuclear and Cytoplasmic stain.



human brain tissue were subjected to SDS PAGE followed by western blot with 11696-2-AP(IPO13 antibody) at dilution of 1:0



Immunohistochemical of paraffin-embedded human gliomas using 11696-2-AP(IPO13 antibody) at dilution of 1:50 (under 10x lens)

Applications

Tested applications:	ELISA, WB, IHC, IF
Cited applications:	IF, IHC, WB
Species specificity:	Human, Mouse, Rat; other species not tested.
Cited species:	Human
Calculated IPO13 MW:	963aa, 108kd
Observed IPO13 MW:	97kd
Positive WB detected in	Human brain tissue, HEK-293 cells, HeLa cells, human heart tissue, mouse testis tissue
Positive IHC detected in	Human gliomas tissue, human endometrial cancer tissue
Positive IF detected in	HeLa cells
Recommended dilution:	WB: 1:1000 - 1:4000 IHC: 1:25 - 1:100 IF: 1:50-1:200

Application key: WB = Western blotting, IHC = Immunohistochemistry, IF = Immunofluorescence, IP = Immunoprecipitation

Immunogen information

Immunogen:	Ag2317
GenBank accession number:	BC008194
Gene ID (NCBI):	9670
Full name:	Importin 13

Product information

Purification method:	Antigen affinity purification
Storage:	PBS with 0.1% sodium azide and 50% glycerol pH 7.3. Store at -20°C.