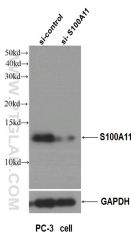


S100A11 Polyclonal Antibody

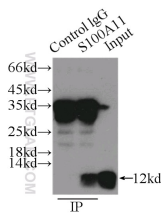
Catalog number: 10237-1-AP
Size: 69 µg/150 µl
Source: Rabbit
Isotype: IgG
Synonyms:
S100A11; Calgizzarin, MLN 70, MLN70, Protein S100 A11, Protein S100 C, S100A11, S100C



PC-3 cells were subjected to SDS PAGE followed by western blot with 10237-1-AP (S100A11 antibody) at dilution of 1:2000



WB result of S100A11 antibody (10237-1-AP, 1:4000) with si-control and si-S100A11 transfected PC-3 cells.



IP Result of anti-S100A11 (IP:10237-1-AP, 3µg; Detection:10237-1-AP 1:1000) with PC-3 cells lysate 1000µg.

Background

S100A11 (also known as S100C or calgizzarin), is a member of the S100 family of proteins containing 2 EF-hand calcium-binding motifs (PMID: 18694925). S100 proteins are localized in the cytoplasm and/or nucleus of a wide range of cells, and involved in the regulation of a number of cellular processes such as cell cycle progression and differentiation. First discovered in 1989, S100A11 has since been proposed to have direct biological functions in an assortment of physiological processes such as endo- and exocytosis, regulation of enzyme activity, cell growth and regulation, apoptosis and inflammation (PMID: 15241500). Chromosomal rearrangements and altered expression of S100A11 have been implicated in tumor metastasis. This S100A11 antibody (10237-1-AP) has also been instrumental in investigations into S100A11's role in the development of brain tumors in tuberous sclerosis complex (TSC) patients (PMID: 20133820).

Applications

Tested applications:	ELISA, IHC, IP, FC, WB
Cited applications:	CoIP, IF, IHC, WB
Species specificity:	Human, Mouse, Rat; other species not tested.
Cited species:	Human, mouse
Calculated S100A11 MW:	105aa, 12 kDa
Observed S100A11 MW:	12 kDa
Positive WB detected in	PC-3 cells, COLO 320 cells, DU 145 cells, HEK-293 cells, human heart tissue, human lung tissue
Positive IP detected in	PC-3 cells
Positive IHC detected in	Human breast cancer tissue, human colon cancer tissue
Positive FC detected in	MCF-7 cells
Recommended dilution:	WB: 1:1000-1:10000 IP: 1:500-1:5000 IHC: 1:20-1:200 FC: N/A

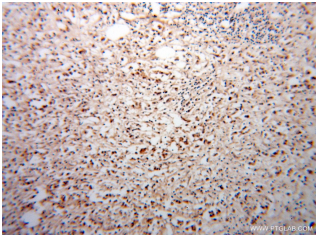
Application key: WB = Western blotting, IHC = Immunohistochemistry, IF = Immunofluorescence, IP = Immunoprecipitation

Immunogen information

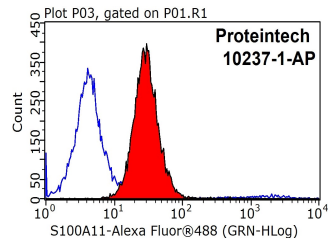
Immunogen:	Ag0343
GenBank accession number:	BC001410
Gene ID (NCBI):	6282
Full name:	S100 calcium binding protein A11

Product information

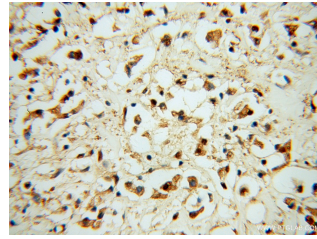
Purification method:	Antigen affinity purification
Storage:	PBS with 0.1% sodium azide and 50% glycerol pH 7.3. Store at -20°C.



Immunohistochemical of paraffin-embedded human breast cancer using 10237-1-AP (S100A11 antibody) at dilution of 1:50 (under 10x lens)



1X10⁶ MCF-7 cells were stained with 0.2ug S100A11 antibody (10237-1-AP, red) and control antibody (blue). Fixed with 90% MeOH blocked with 3% BSA (30 min). Alexa Fluor 488-conjugated AffiniPure Goat Anti-Rabbit IgG(H+L) with dilution 1:1000.



Immunohistochemical of paraffin-embedded human breast cancer using 10237-1-AP (S100A11 antibody) at dilution of 1:50 (under 40x lens)