

## NKG2A Polyclonal Antibody

Catalog number: 10935-1-AP

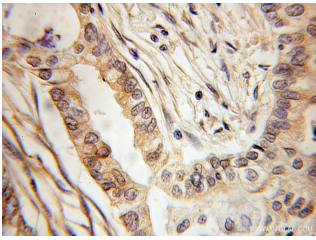
Size: 45 µg/150 µl

Source: Rabbit

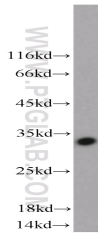
Isotype: IgG

Synonyms:

KLRC1; CD159A, KLRC1, NK cell receptor A, NKG2, NKG2A



Immunohistochemical of paraffin-embedded human lung cancer using 10935-1-AP (KLRC1 antibody) at dilution of 1:100 (under 10x lens)



Jurkat cells were subjected to SDS PAGE followed by western blot with 10935-1-AP (KLRC1 antibody) at dilution of 1:800

### Background

KLRC1, also known as NKG2A (NKG2) and CD159A, is a single-pass type II membrane protein with extracellular C-type lectin domain. It belongs to the natural killer cell lectin-like receptor family, which is a group of transmembrane proteins preferentially expressed in NK cells. KLRC1 can form a heterodimer with CD94. The NKG2A/CD94 complex is an inhibitory receptor that recognizes HLA-E and is expressed by NK cells and a subset of T cells.

### Applications

Tested applications:	ELISA, IHC, WB
Species specificity:	Human; other species not tested.
Calculated NKG2A MW:	26 kDa
Observed NKG2A MW:	33kd
Positive WB detected in	Jurkat cells, HEK-293 cells, human liver tissue
Positive IHC detected in	Human lung cancer tissue
Recommended dilution:	WB: 1:200-1:2000 IHC: 1:20-1:200

Application key: WB = Western blotting, IHC = Immunohistochemistry, IF = Immunofluorescence, IP = Immunoprecipitation

### Immunogen information

Immunogen:	Ag1376
GenBank accession number:	BC012550
Gene ID (NCBI):	3821
Full name:	Killer cell lectin-like receptor subfamily C, member 1

### Product information

Purification method:	Antigen affinity purification
Storage:	PBS with 0.1% sodium azide and 50% glycerol pH 7.3. Store at -20°C.