

HAT1 Polyclonal Antibody

Catalog number: 11432-1-AP

Size: 20 µg/150 µl

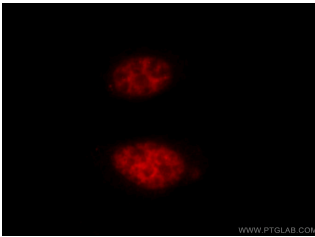
Source: Rabbit

Isotype: IgG

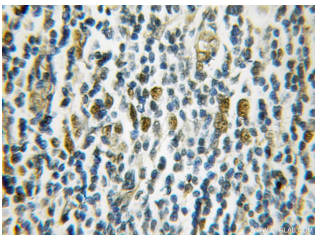
Synonyms:

HAT1; HAT1, histone

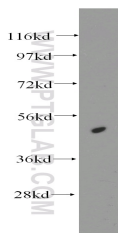
acetyltransferase 1, KAT1



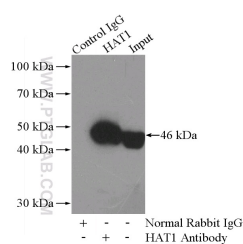
Immunofluorescent analysis of HepG2 cells, using HAT1 antibody 11432-1-AP at 1:25 dilution and Rhodamine-labeled goat anti-rabbit IgG (red).



Immunohistochemical of paraffin-embedded human lymphoma using 11432-1-AP (HAT1 antibody) at dilution of 1:50 (under 10x lens)



MCF7 cells were subjected to SDS PAGE followed by western blot with 11432-1-AP (HAT1 antibody) at dilution of 1:500



IP Result of anti-HAT1

(IP:11432-1-AP, 4µg;

Detection:11432-1-AP 1:500)

Applications

Tested applications:	ELISA, WB, IHC, IF, IP
Species specificity:	Human, Mouse, Rat; other species not tested.
Calculated HAT1 MW:	419aa, 50 kDa
Observed HAT1 MW:	46kd
Positive WB detected in	MCF7 cells, human liver tissue
Positive IP detected in	HepG2 cells
Positive IHC detected in	Human lymphoma tissue
Positive IF detected in	HepG2 cells
Recommended dilution:	WB: 1:200-1:2000
	IP: 1:200-1:2000
	IHC: 1:20-1:200
	IF: 1:10-1:100

Application key: WB = Western blotting, IHC = Immunohistochemistry, IF = Immunofluorescence, IP = Immunoprecipitation

Immunogen information

Immunogen:	Ag1952
GenBank accession number:	BC018682
Gene ID (NCBI):	8520
Full name:	Histone acetyltransferase 1

Product information

Purification method:	Antigen affinity purification
Storage:	PBS with 0.1% sodium azide and 50% glycerol pH 7.3. Store at -20°C.

with HepG2 cells lysate
3200ug.