

P-selectin Polyclonal Antibody

Catalog number: 13304-1-AP

Size: 38 µg/150 µl

Source: Rabbit

Isotype: IgG

Synonyms:

SELP; CD62, CD62P, FLJ45155,

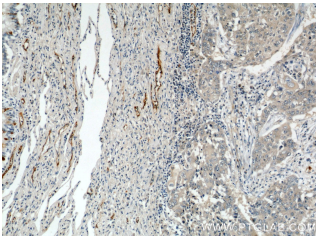
GMP 140, GMP140, GMRP,

Granule membrane protein 140,

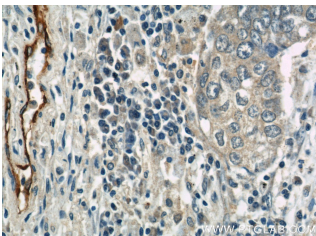
GRMP, LECAM3, P selectin,

PADGEM, PSEL, P-selectin,

SELP



Immunohistochemical of paraffin-embedded human lung cancer using 13304-1-AP (SELP antibody) at dilution of 1:50 (under 10x lens)



Immunohistochemical of paraffin-embedded human lung cancer using 13304-1-AP (SELP antibody) at dilution of 1:50 (under 40x lens)

Background

P-selectin, also known as GMP140 or CD62P, is a transmembrane glycoprotein that mediates the interaction of activated endothelial cells or platelets with leukocytes. It is an adhesion molecule involved in the pathogenesis of inflammation, thrombosis, and oncogenesis. P-selectin is stored in the alpha-granules of platelets and Weibel-Palade bodies of endothelial cells. Upon cell activation by agonists, P-selectin is transported rapidly to the cell surface.

Applications

Tested applications:	ELISA, IHC
Species specificity:	Human; other species not tested.
Calculated P-selectin MW:	830aa,91 kDa
Observed P-selectin MW:	
Positive IHC detected in	Human lung cancer tissue
Recommended dilution:	IHC: 1:20-1:200

Application key: WB = Western blotting, IHC = Immunohistochemistry, IF = Immunofluorescence, IP = Immunoprecipitation

Immunogen information

Immunogen:	Ag4124
GenBank accession number:	BC028067
Gene ID (NCBI):	6403
Full name:	Selectin P (granule membrane protein 140kDa, antigen CD62)

Product information

Purification method:	Antigen affinity purification
Storage:	PBS with 0.1% sodium azide and 50% glycerol pH 7.3. Store at -20°C.