

CTDSP1 Polyclonal Antibody

Catalog number: 10952-1-AP

Size: 45 µg/150 µl

Source: Rabbit

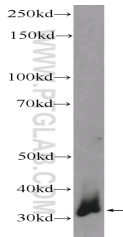
Isotype: IgG

Synonyms:

CTDSP1; CTDSP1, NIF3, NLI IF,

NLI interacting factor 3, NLIIF,

SCP1, Small CTD phosphatase 1



mouse liver tissue were subjected to SDS PAGE followed by western blot with 10952-1-AP(CTDSP1 Antibody) at dilution of 1:300

Background

CTDSP1 also named as NIF3, NLIIF, or SCP1, is a 261 amino acid protein, which contains one FCP1 homology domain. CTDSP1 localizes in the nucleus and colocalizes with RNA polymerase II. CTDSP1 is expressed in non-neuronal tissues. It is highly expressed in skeletal muscle, spleen, lung and placenta. CTDSP1 preferentially catalyzes the dephosphorylation of 'Ser-5' within the tandem 7 residues repeats in the C-terminal domain (CTD) of the largest RNA polymerase II subunit POLR2.

Applications

Tested applications:	ELISA, WB
Species specificity:	Human, Mouse, Rat; other species not tested.
Calculated CTDSP1 MW:	29 kDa
Observed CTDSP1 MW:	33 kDa
Positive WB detected in	Mouse liver tissue, mouse heart tissue
Recommended dilution:	WB: 1:200-1:1000

Application key: WB = Western blotting, IHC = Immunohistochemistry, IF = Immunofluorescence, IP = Immunoprecipitation

Immunogen information

Immunogen:	Ag1410
GenBank accession number:	BC012977
Gene ID (NCBI):	58190
Full name:	CTD (carboxy-terminal domain, RNA polymerase II, polypeptide A) small phosphatase 1

Product information

Purification method:	Antigen affinity purification
Storage:	PBS with 0.1% sodium azide and 50% glycerol pH 7.3. Store at -20°C.