

GRK6 Polyclonal Antibody

Catalog number: 11439-1-AP

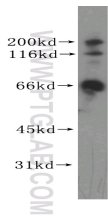
Size: 22 µg/150 µl

Source: Rabbit

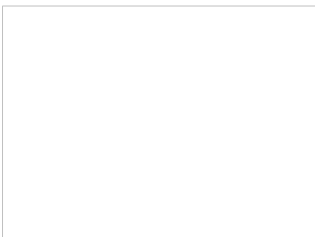
Isotype: IgG

Synonyms:

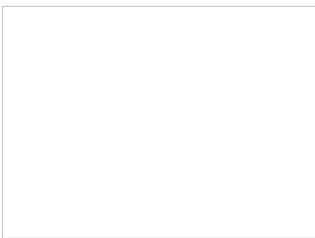
GRK6; FLJ32135, GPRK6, GRK6



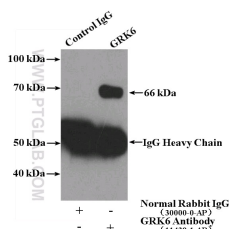
HEK-293 cells were subjected to SDS PAGE followed by western blot with 11439-1-AP (GRK6 antibody) at dilution of 1:500



Immunohistochemistry of paraffin-embedded human renal cell carcinoma tissue slide using 11439-1-AP (GRK6 Antibody) at dilution of 1:100 (under 10x lens). heat mediated antigen retrieved with Tris-EDTA buffer (pH9).



Immunohistochemistry of paraffin-embedded human renal cell carcinoma tissue slide using 11439-1-AP (GRK6 Antibody) at dilution of 1:100 (under 40x lens). heat mediated antigen retrieved with Tris-EDTA buffer (pH9).



Applications

Tested applications:	ELISA, WB, IP, IHC
Cited applications:	WB
Species specificity:	Human, Mouse, Rat; other species not tested.
Cited species:	Human
Calculated GRK6 MW:	66 kDa
Observed GRK6 MW:	66 kDa
Positive WB detected in	HEK-293 cells, human kidney tissue
Positive IP detected in	HEK-293 cells
Positive IHC detected in	Human renal cell carcinoma tissue
Recommended dilution:	WB: 1:500-1:5000 IP: 1:200-1:2000 IHC: 1:50-1:500

Application key: WB = Western blotting, IHC = Immunohistochemistry, IF = Immunofluorescence, IP = Immunoprecipitation

Immunogen information

Immunogen:	Ag1992
GenBank accession number:	BC017272
Gene ID (NCBI):	2870
Full name:	G protein-coupled receptor kinase 6

Product information

Purification method:	Antigen affinity purification
Storage:	PBS with 0.1% sodium azide and 50% glycerol pH 7.3. Store at -20°C.

**IP Result of anti-GRK6
(IP:11439-1-AP, 4ug;
Detection:11439-1-AP 1:500)
with HEK-293 cells lysate
1120ug.**