

## KLC3 Polyclonal Antibody

Catalog number: 11645-1-AP

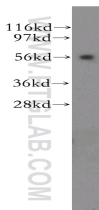
Size: 45 µg/150 µl

Source: Rabbit

Isotype: IgG

Synonyms:

KLC3; kinesin light chain 2,  
kinesin light chain 3, KLC2, KLC2  
like, KLC2L, KLC3, KLCT, KNS2B



human liver tissue were subjected to SDS PAGE followed by western blot with 11645-1-AP(KLC3 antibody) at dilution of 1:500

### Applications

Tested applications:	ELISA, WB
Species specificity:	Human,Mouse,Rat; other species not tested.
Calculated KLC3 MW:	55 kDa
Observed KLC3 MW:	55 kDa
Positive WB detected in	Human liver tissue
Recommended dilution:	WB: 1:500-1:5000

Application key: WB = Western blotting, IHC = Immunohistochemistry, IF = Immunofluorescence, IP = Immunoprecipitation

### Immunogen information

Immunogen:	Ag2243
GenBank accession number:	BC025318
Gene ID (NCBI):	147700
Full name:	Kinesin light chain 3

### Product information

Purification method:	Antigen affinity purification
Storage:	PBS with 0.1% sodium azide and 50% glycerol pH 7.3. Store at -20°C.