

## IL22RA1 Polyclonal Antibody

Catalog number: 13462-1-AP

Size: 79 µg/150 µl

Source: Rabbit

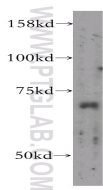
Isotype: IgG

Synonyms:

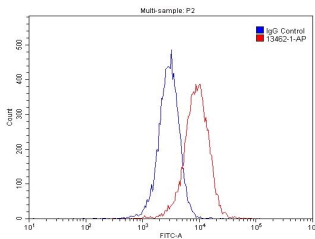
IL22RA1; CRF2 9, IL 22 receptor subunit alpha 1, IL 22R alpha 1,

IL 22RA1, IL22R, IL22R1,

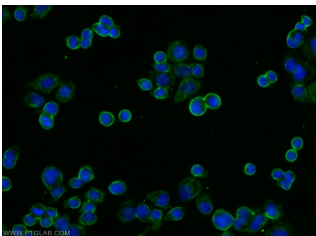
IL22RA1, ZcytoR11



mouse spleen tissue were subjected to SDS PAGE followed by western blot with 13462-1-AP(IL22RA1 antibody) at dilution of 1:400



1X10<sup>6</sup> HepG2 cells were stained with .2µg IL22RA1 antibody (13462-1-AP, red) and control antibody (blue). Fixed with 4% PFA blocked with 3% BSA (30 min). Alexa Fluor 488-conjugated AffiniPure Goat Anti-Rabbit IgG(H+L) with dilution 1:1500.



Immunofluorescent analysis of COLO 320 cells using 13462-1-AP( IL22RA1 Antibody) at dilution of 1:25 and Alexa Fluor 488-conjugated AffiniPure Goat Anti-Rabbit IgG(H+L)

### Applications

Tested applications:	ELISA, WB, IF, FC
Species specificity:	Human,Mouse,Rat; other species not tested.
Calculated IL22RA1 MW:	574aa,63 kDa
Observed IL22RA1 MW:	62 kDa
Positive WB detected in	Mouse spleen tissue, COLO 320 cells, HEK-293 cells, HepG2 cells
Positive IF detected in	COLO 320 cells
Positive FC detected in	HepG2 cells
Recommended dilution:	WB: 1:500-1:5000 IF: 1:10-1:100 FC: N/A

Application key: WB = Western blotting, IHC = Immunohistochemistry, IF = Immunofluorescence, IP = Immunoprecipitation

### Immunogen information

Immunogen:	Ag4056
GenBank accession number:	BC029273
Gene ID (NCBI):	58985
Full name:	Interleukin 22 receptor, alpha 1

### Product information

Purification method:	Antigen affinity purification
Storage:	PBS with 0.02% sodium azide and 50% glycerol pH 7.3. Store at -20°C.