

## SUCLA2 Polyclonal Antibody

Catalog number: 12627-1-AP

Size: 38 µg/150 µl

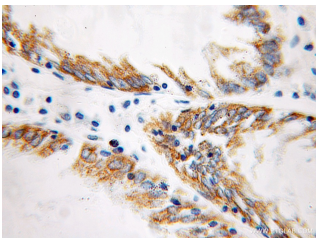
Source: Rabbit

Isotype: IgG

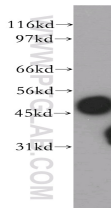
Synonyms:

SUCLA2; A BETA, SCS betaA,

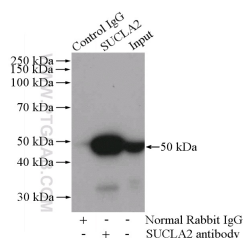
SUCLA2



Immunohistochemical of paraffin-embedded human colon cancer using 12627-1-AP(SUCLA2 antibody) at dilution of 1:100 (under 10x lens)



PC-3 cells were subjected to SDS PAGE followed by western blot with 12627-1-AP(SUCLA2 antibody) at dilution of 1:500



IP Result of anti-SUCLA2 (IP:12627-1-AP, 4µg; Detection:12627-1-AP 1:1000) with HEK-293 cells lysate 2800µg.

### Background

SUCLA2(succinyl-CoA ligase [ADP-forming] subunit beta, mitochondrial) is also named as SCS-betaA and belongs to the succinate/malate CoA ligase beta subunit family. It can catalyzes the ATP-dependent ligation of succinate and CoA to form succinyl-CoA. Defects in SUCLA2 are the cause of mitochondrial DNA depletion syndrome type 5 (MTDPS5).

### Applications

Tested applications:	ELISA, WB, IHC, IP
Cited applications:	IF, WB
Species specificity:	Human, Mouse, Rat; other species not tested.
Cited species:	Human, mouse, rat
Calculated SUCLA2 MW:	463aa, 50 kDa
Observed SUCLA2 MW:	48-50 kDa
Positive WB detected in	PC-3 cells, HEK-293 cells, HepG2 cells, L02 cells, mouse brain tissue, mouse liver tissue, SH-SY5Y cells
Positive IP detected in	HEK-293 cells
Positive IHC detected in	Human colon cancer tissue, human heart tissue, human kidney tissue
Recommended dilution:	WB: 1:500-1:5000
	IP: 1:500-1:5000
	IHC: 1:20-1:200

Application key: WB = Western blotting, IHC = Immunohistochemistry, IF = Immunofluorescence, IP = Immunoprecipitation

### Immunogen information

Immunogen:	Ag3319
GenBank accession number:	BC027587
Gene ID (NCBI):	8803
Full name:	Succinate-CoA ligase, ADP-forming, beta subunit

### Product information

Purification method:	Antigen affinity purification
Storage:	PBS with 0.1% sodium azide and 50% glycerol pH 7.3. Store at -20°C.