

ERG Polyclonal Antibody

Catalog number: 14356-1-AP

Size: 20 µg/150 µl

Source: Rabbit

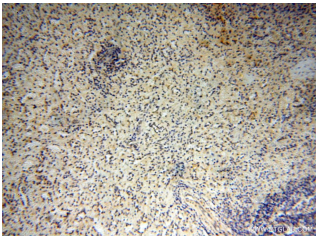
Isotype: IgG

Synonyms:

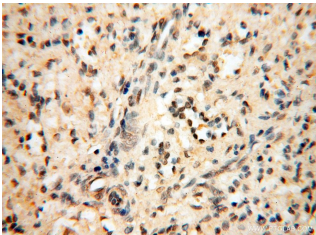
ERG; ERG, erg 3, p55,

Transcriptional regulator ERG,

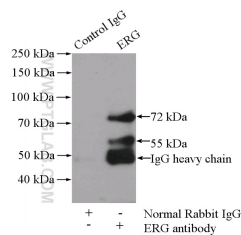
Transforming protein ERG



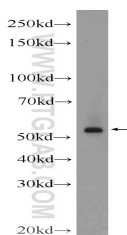
Immunohistochemical of paraffin-embedded human spleen using 14356-1-AP(ERG antibody) at dilution of 1:25 (under 10x lens)



Immunohistochemical of paraffin-embedded human spleen using 14356-1-AP(ERG antibody) at dilution of 1:25 (under 40x lens)



IP Result of anti-ERG (IP:14356-1-AP, 4µg; Detection:14356-1-AP 1:500) with MCF-7 cells lysate 800µg.



MCF-7 cells were subjected to SDS PAGE followed by western blot with 14356-1-

Applications

Tested applications:	ELISA, IHC, WB, IP
Species specificity:	Human, Mouse, Rat; other species not tested.
Calculated ERG MW:	55 kDa
Observed ERG MW:	55 kDa
Positive WB detected in	MCF-7 cells, HEK-293 cells
Positive IP detected in	MCF-7 cells
Positive IHC detected in	Human spleen tissue, human brain tissue, human kidney tissue, human lung tissue, human ovary tissue, human testis tissue
Recommended dilution:	WB: 1:200-1:2000 IP: 1:200-1:2000 IHC: 1:10-1:100

Application key: WB = Western blotting, IHC = Immunohistochemistry, IF = Immunofluorescence, IP = Immunoprecipitation

Immunogen information

Immunogen:	Ag5708
GenBank accession number:	BC040168
Gene ID (NCBI):	2078
Full name:	V-ets erythroblastosis virus E26 oncogene homolog (avian)

Product information

Purification method:	Antigen affinity purification
Storage:	PBS with 0.02% sodium azide and 50% glycerol pH 7.3. Store at -20°C.

**AP(ERG Antibody) at
dilution of 1:600**