

SMARCA5 Polyclonal Antibody

Catalog number: 13066-1-AP

Size: 20 µg/150 µl

Source: Rabbit

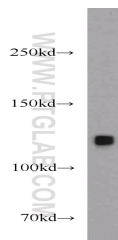
Isotype: IgG

Synonyms:

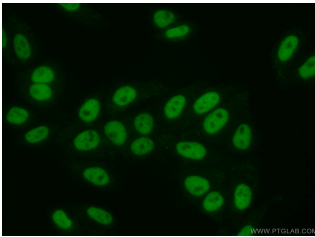
SMARCA5; hISWI, hSNF2H,

ISWI, SMARCA5, SNF2H,

WCRF135



HepG2 cells were subjected to SDS PAGE followed by western blot with 13066-1-AP(SMARCA5 antibody) at dilution of 1:800



Immunofluorescent analysis of (10% Formaldehyde) fixed HepG2 cells using 13066-1-AP(SMARCA5 Antibody) at dilution of 1:50 and Alexa Fluor 488-conjugated AffiniPure Goat Anti-Rabbit IgG(H+L)

Applications

Tested applications:	ELISA, WB, IF
Species specificity:	Human,Mouse,Rat; other species not tested.
Calculated SMARCA5 MW:	1052aa,122 kDa
Observed SMARCA5 MW:	122 kDa
Positive WB detected in	HepG2 cells, A431 cells, HeLa cells, Jurkat cells, MCF7 cells
Positive IF detected in	HepG2 cells
Recommended dilution:	WB: 1:200-1:2000 IF: 1:20-1:200

Application key: WB = Western blotting, IHC = Immunohistochemistry, IF = Immunofluorescence, IP = Immunoprecipitation

Immunogen information

Immunogen:	Ag3759
GenBank accession number:	BC023144
Gene ID (NCBI):	8467
Full name:	SWI/SNF related, matrix associated, actin dependent regulator of chromatin, subfamily a, member 5

Product information

Purification method:	Antigen affinity purification
Storage:	PBS with 0.02% sodium azide and 50% glycerol pH 7.3. Store at -20°C.