

## ETV5 Polyclonal Antibody

Catalog number: 13011-1-AP

Size: 79 µg/150 µl

Source: Rabbit

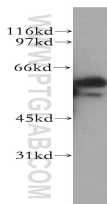
Isotype: IgG

Synonyms:

ETV5; ERM, Ets related protein

ERM, ETS translocation variant

5, ets variant 5, ETV5



PC-3 cells were subjected to SDS PAGE followed by western blot with 13011-1-AP(ETV5 antibody) at dilution of 1:500

### Background

ETS variant gene 5(ETV5) belongs to the ETS oncogene family that shares a conserved peptide, ETS domain, which mediates sequence-specific DNA binding. ETV5 is a transcription factor and is required for spermatogonial stem cell self-renewal. ETV5 can be negatively regulated by COP1, a tumor suppressor. Also it has a role in branching morphogenesis in the developing kidney

### Applications

Tested applications:	ELISA, WB
Species specificity:	Human,Mouse,Rat; other species not tested.
Calculated ETV5 MW:	510aa,58kd
Observed ETV5 MW:	58kd
Positive WB detected in	PC-3 cells
Recommended dilution:	WB: 1:500-1:5000

Application key: WB = Western blotting, IHC= Immunohistochemistry, IF= Immunofluorescence, IP = Immunoprecipitation

### Immunogen information

Immunogen:	Ag3708
GenBank accession number:	BC007333
Gene ID (NCBI):	2119
Full name:	Ets variant 5

### Product information

Purification method:	Antigen affinity purification
Storage:	PBS with 0.1% sodium azide and 50% glycerol pH 7.3. Store at -20°C.